



INSTALLATION OF REAR MOUNTING KIT

SAFETY PRECAUTIONS

If any installation problems are encountered, please call G&B Specialties, Inc. for technical assistance before continuing with the installation process.



- Failure to heed to any of the following warnings could result in severe bodily injury and/or equipment damage.
- Read and understand this manual completely before attempting installation of the equipment.
- Installation instructions provided below only address the Rafna railgear equipment. Applicable railway company procedures and policies must be adhered to.
- Before performing any work under the vehicle or railgear, ensure the engine is turned off and the parking brake is set.
- Ensure all removed components are given to the vehicle owner after the installation of the railgear. These components must be re-installed if the railgear is removed from the vehicle.
- Always disconnect the vehicle's battery when welding on the vehicle or railgear in order to protect the vehicle's electrical system.



INSTALLATION OF REAR MOUNTING KIT

The following procedure details the installation of the rear mounting kit. The hardware required for this installation is listed in table 1.

Table 1: Rear Mounting Kit Installation Parts

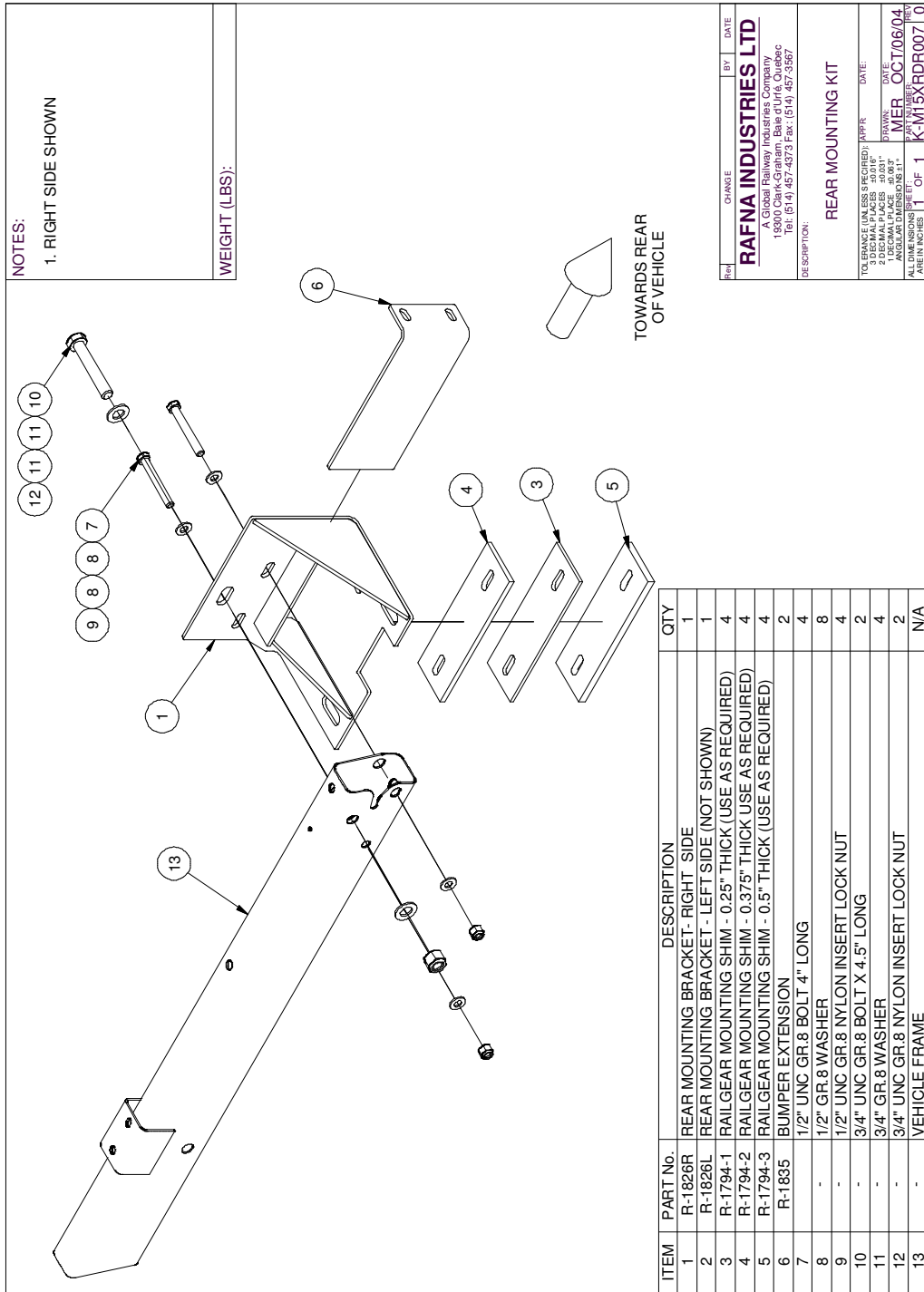
Part Number	Description	Qty
R-1826L	Rear Mounting Bracket (Left Side)	1
R-1826R	Rear Mounting Bracket (Right Side)	1
R-1835	Bumper Extension	2
R-1794-1	Railgear Mounting Shim – 0.25” Thick	4
R-1794-2	Railgear Mounting Shim – 0.375” Thick	4
R-1794-3	Railgear Mounting Shim – 0.5” Thick	4
	½” UNC Gr.8 Bolt x 4” Long	4
	½” Gr.8 Washer	8
	½” UNC Gr.8 Nylon Insert Lock Nut	4
	¾” UNC Gr.8 Bolt x 4.5” Long	2
	¾” Gr.8 Washer	4
	¾” UNC Gr.8 Nylon Insert Lock Nut	2

1. Remove the original spare tire from under the vehicle’s cargo box if so equipped. The original spare tire will not be re-installed.
2. Remove the rear bumper and rear bumper brackets from the frame. Retain the rear bumper and related hardware for re-installation.
3. Place each rear-mounting bracket against the underside and outside of the frame rails as shown, just behind the spring hangers. The three slots in the side of each rear-mounting bracket should align with the three holes in the side of the frame.
4. Fasten each rear mounting bracket to the side of the frame with two ½” x 4” long bolts, four ½” washers, and two ½” nuts and one ¾” x 4.5” long bolt, two ¾” washers, and one ¾” nut.
5. Torque the ½” fasteners to 100 ft-lbs dry and the ¾” fasteners to 175 ft-lbs dry. Do not over torque.
6. The supplied railgear mounting shims are to be used as required when mounting the railgear to the rear mounting brackets.



Following the railgear installation, the rear bumper will not fit in its original position. Rafna supplies rear bumper extensions to move the rear bumper further out, in order for it to fit over the railgear with minimal trimming required as described in the following steps.

7. Install the vehicle rear bumper extensions on the rear bumper using the original fasteners. The bumper extensions should be centered in the bumper slots.
8. Torque the original fasteners to OEM specifications.
9. Position the rear bumper and rear bumper extensions on the rear most gussets of the rear mounting brackets.
10. Shorten the rear bumper extensions as required.
11. Weld the rear bumper extensions onto the rear most gussets of the rear mounting brackets.
12. The installer may fabricate a cover plate made of aluminium tread plate to cover the gap between the bumper and the vehicle body.
13. The installer may have to trim the bumper to avoid any interference between the railgear and the bumper.



REV	CHANGE	BY	DATE
RAFNA INDUSTRIES LTD			
A Global Railway Industries Company			
19300 Clark-Graham, Bâle et Urifé, Québec			
Tel: (514) 457-4373 Fax: (514) 457-3957			
DESCRIPTION: REAR MOUNTING KIT			
TOLERANCE UNLESS SPECIFIED:	PAPER	DATE:	
3 DECIMAL PLACES			
2 DECIMAL PLACES			
1 DECIMAL PLACE			
NO DIMENSIONS			
ALL DIMENSIONS UNLESS SPECIFIED			
ARE IN INCHES	1	OF 1	K-M15XRDR007 0