



## INSTALLATION OF STEERING WHEEL LOCK

### SAFETY PRECAUTIONS

**If any installation problems are encountered, please call G&B Specialties, Inc. for technical assistance before continuing with the installation process.**



- Failure to heed to any of the following warnings could result in severe bodily injury and/or equipment damage.
- Read and understand this manual completely before attempting installation of the equipment.
- Installation instructions provided below only address the Rafna railgear equipment. Applicable railway company procedures and policies must be adhered to.
- Ensure the areas where the adhesive back strips will be affixed are clean, and free of dirt and grease. Do not touch these areas or the adhesive on the back of the strips.
- Wait a minimum of 24 hours for the adhesive strips to fully cure before using the steering wheel lock.
- Ensure that the steering wheel lock does not interfere with any vehicle devices including the air bags



## INSTALLATION OF STEERING WHEEL LOCK

The following procedure details the steering wheel lock installation. The hardware required for this installation is listed in Table 1.

Table 1: Steering Wheel Lock Kit

Part Number	Description	Qty
S-001050	Steering Wheel Lock	1
S-001040	Steering Wheel Lock Decal	1

1. Ensure the front wheels are pointing straight ahead and the steering wheel is centered before installation.
2. The steering wheel lock consists of one steering wheel lock patch with Rafna logo and three adhesive back strips.
3. Without removing the protective backing, position one adhesive back strip on top of the steering column cover and another on the steering wheel. The strips should be close enough together so that the patch will cover both of them when the steering wheel lock is engaged. Ensure that the adhesive back strips do not interfere with any devices, such as the hazard light button on the steering column cover or the air bag cover on the steering wheel. Modify the adhesive back strips as required to clear any obstructions. Mark their locations on the steering column cover and the steering wheel.
4. Without removing the protective backing, position the third adhesive back strip in a convenient location on the dash (so that it does not interfere with the view and/or operation of the vehicle). This adhesive back strip will serve as a holder when the steering wheel lock is disengaged. Mark the location.
5. Scuff the three areas previously marked with medium / fine sand paper. The areas should be free of dust, dirt, and any oily residue. Thoroughly clean the areas with denatured alcohol or a similar non-oil based degreaser that will not react with the plastic. Let dry.
6. Take care when placing the adhesive back strips; once they are applied, they should not be removed. Do not touch the adhesive with your fingers. Removing the adhesive back strips once installed, or touching the adhesive may cause poor adhesion.



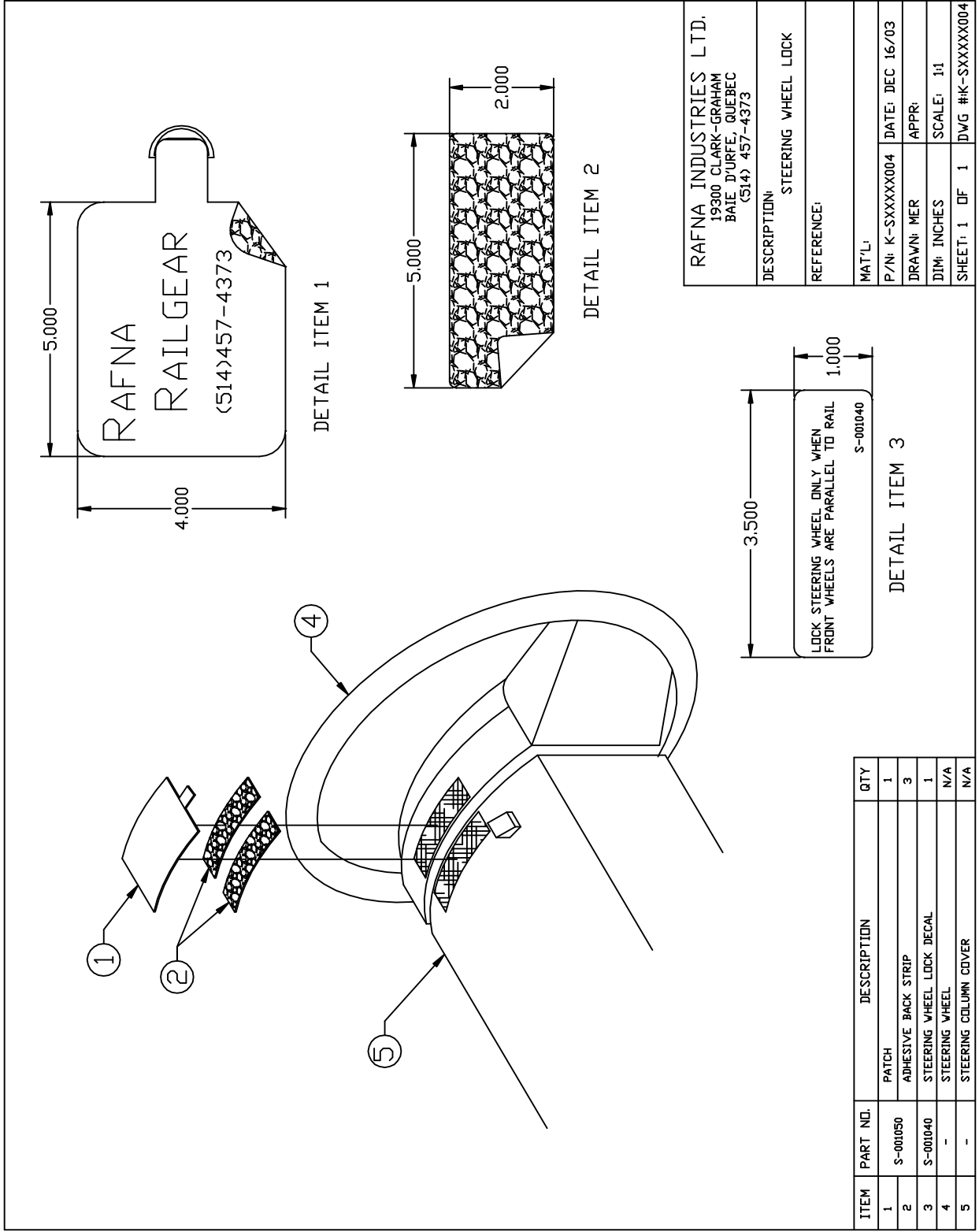
**G&B Specialties, Inc.**  
A Global Railway Industries Company



Page 3 of 4

Bulletin MI-SXXXXX004

7. Peel off the protective backing from the adhesive back strips. Firmly press them into place as previously located. Do not disturb the adhesive back strips for 24 to 30 hours to allow the adhesive to fully cure.
8. Store the steering wheel lock patch on the adhesive back strip located on the dash.
9. Stick the steering wheel lock decal in a highly visible spot on the dashboard.



DESCRIPTION:	STEERING WHEEL LOCK
REFERENCE:	
MAT'L:	
P/N:	K-SXXXXX004
DATE:	DEC 16/03
DRAWN:	MER
APPR:	
DIM:	INCHES
SCALE:	1:1
SHEET:	1 OF 1
DWG #:	K-SXXXXX004

RAFNA INDUSTRIES LTD. 19300 CLARK-GRAHAM BAIE D'URFEL, QUEBEC (514) 457-4373
LOCK STEERING WHEEL ONLY WHEN FRONT WHEELS ARE PARALLEL TO RAIL
S-001040
DETAIL ITEM 3