



INSTALLATION AND OPERATIONS OF REAR AIR LOCK KIT

SAFETY PRECAUTIONS

If any installation problems are encountered, please call G&B Specialties, Inc. for technical assistance before continuing with the installation process.



- Failure to heed to any of the following warnings could result in severe bodily injury and/or equipment damage.
- Read and understand this manual completely before attempting installation of the equipment.
- Installation instructions provided below only address the G&B Specialties railgear equipment. Applicable railway company procedures and policies must be adhered to.
- Before performing any work under the vehicle or railgear, ensure the engine is turned off and the parking brake is set.
- Beware of all pinch points on the railgear and keep all parts of the body clear.



The following procedure details the installation of the rear air lock kit.

Rear Air Lockup Parts.

ITEM	QTY	PART NUMBER	DESCRIPTION
1	2	R-11146	PIN PLATE
2	4	R-11147	GUIDE ROD
3	2	R-11148	TIE PLATE
4	4	R-11138	LOCKUP PIN
5	2	R-13144	AIR LOCKUP CYLINDER
6	8	-	1/2" HEX JAM NUT
7	4	-	3/8" NYLOCK NUT
8	4	-	3/8" TYPE-A FLAT WASHER
9	4	-	5/16" HELICAL SPRING LOCK WASHER
10	4	-	5/16" - 24 UNF JAM NUT



1. Fasten the two lockup pins (Item 4, Fig. 1) to the pin plate (Item 1, Fig. 1) using two 3/8" flat washers and two 3/8" nylock nuts (Items 7 & 8, Fig. 1) as shown in figure 1.
2. Thread the guide rods (Item 2, Fig. 1) into the drilled holes, making sure the 1/2" threaded end is in the holes, and weld 1/4" fillet weld all around as shown in figure 1.
3. Fasten the tie plate (Item 3, Fig. 1) to the air cylinder (Item 5, Fig. 1) as shown in figure 1.
4. Fully extend the air cylinder and fasten the rod end of the cylinder to the pin plate using two 5/16" lock washers and two 5/16" jam nuts (Items 9 & 10, Fig. 1) as shown in figure 1.
5. Place the pin plate onto the guide rods and thread two 1/2" hex jam nuts (Item 6, Fig. 1) onto the guide rods as shown in figure 1.
6. Push the assembly down the guide rods until the pin plate hits the lower link arm spacers and fasten the tie plate with the two remaining jam nuts and tighten the 1/2" jam nuts.
7. Make sure that the cylinder rod end does not contact the arm when assembled. Adjust the pin plate on the cylinder rod end if there is contact.
8. Repeat same procedure for the opposite side.
9. Plumb the air cylinders using the correct fittings and valves.
10. Cover any part of the air hoses that contact sharp edges on the vehicle with wire loom.
11. Run the railgear up and down, making sure the pin plate contacts the link arm spacers when the lockup is engaged in the lock position.

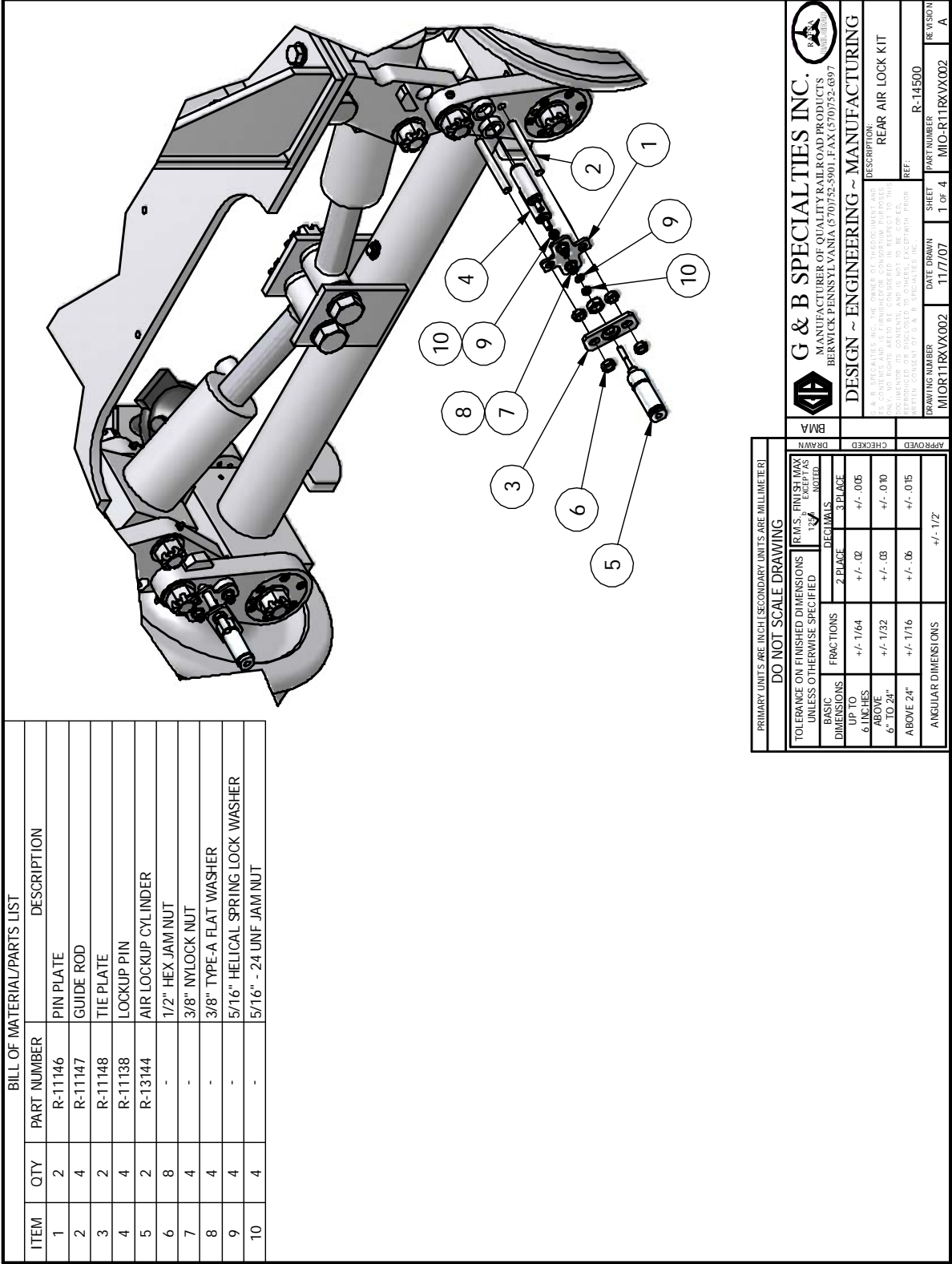


Fig 1