



**OPERATION, SERVICE AND PARTS
OF FRONT MOUNTING KIT
2008 FORD F-250/350 4X4**

SAFETY PRECAUTIONS

If any operating, services or parts problems are encountered, please call G&B Specialties for technical assistance.



- Failure to heed to any of the following warnings could result in severe bodily injury and/or equipment damage.
- Read and understand this manual completely before attempting operation of the railgear equipped vehicle.
- Operating instructions provided below only address the Rafna Industries railgear equipment. Applicable railway company procedures and policies must be adhered to.
- Railway company rules governing rail travel must be observed at all times.
- Before performing any work under the vehicle or railgear, ensure the engine is turned off and the parking brake is set.
- Never operate the vehicle if the Gross Vehicle Weight Rating (GVWR), Gross Axle Weight Rating Front or Rear (GAWR), or the wheel or tire load ratings are exceeded.



OPERATION OF FRONT MOUNTING KIT

With the front mounting kit installed on this vehicle, it may be operated as normal, however the front bumper is located further forward than standard. Side wands are located on the front bumper to aid in determining the length and width of the vehicle. Caution must be used when operating the vehicle.

Never operate the vehicle if the Gross Vehicle Weight Rating (GVWR), Gross Axle Weight Rating Front or Rear (GAWR), or the wheel or tire load ratings are exceeded.

SERVICE OF FRONT MOUNTING KIT

The front mounting kit must be serviced regularly to avoid damage to the equipment. Table 1 below provides the Recommended Service Schedule and Table 2 provides Standard Fastener Torque Values.

Table 1: Recommended Service Schedule

Service Required	Initial 62 miles (100 km) of road and/or rail use	Daily	Weekly	Monthly
Inspect front mounting kit fasteners (re-torque if required)		✓	✓	✓

Table 2: Standard Fastener Torque Values

Fastener Size	Fastener Torque Value (ft-lbs) Dry
1" UNC Gr. 8 Fasteners	250
3/4" UNC Gr. 8 Fasteners	175
5/8" UNC Gr. 8 Fasteners	150
1/2" UNC Gr. 8 Fasteners	100
1/2" UNC Gr. 2 Fasteners	35
3/8" UNC Gr. 8 Fasteners	40
1/4" UNC Gr. 8 Fasteners	12



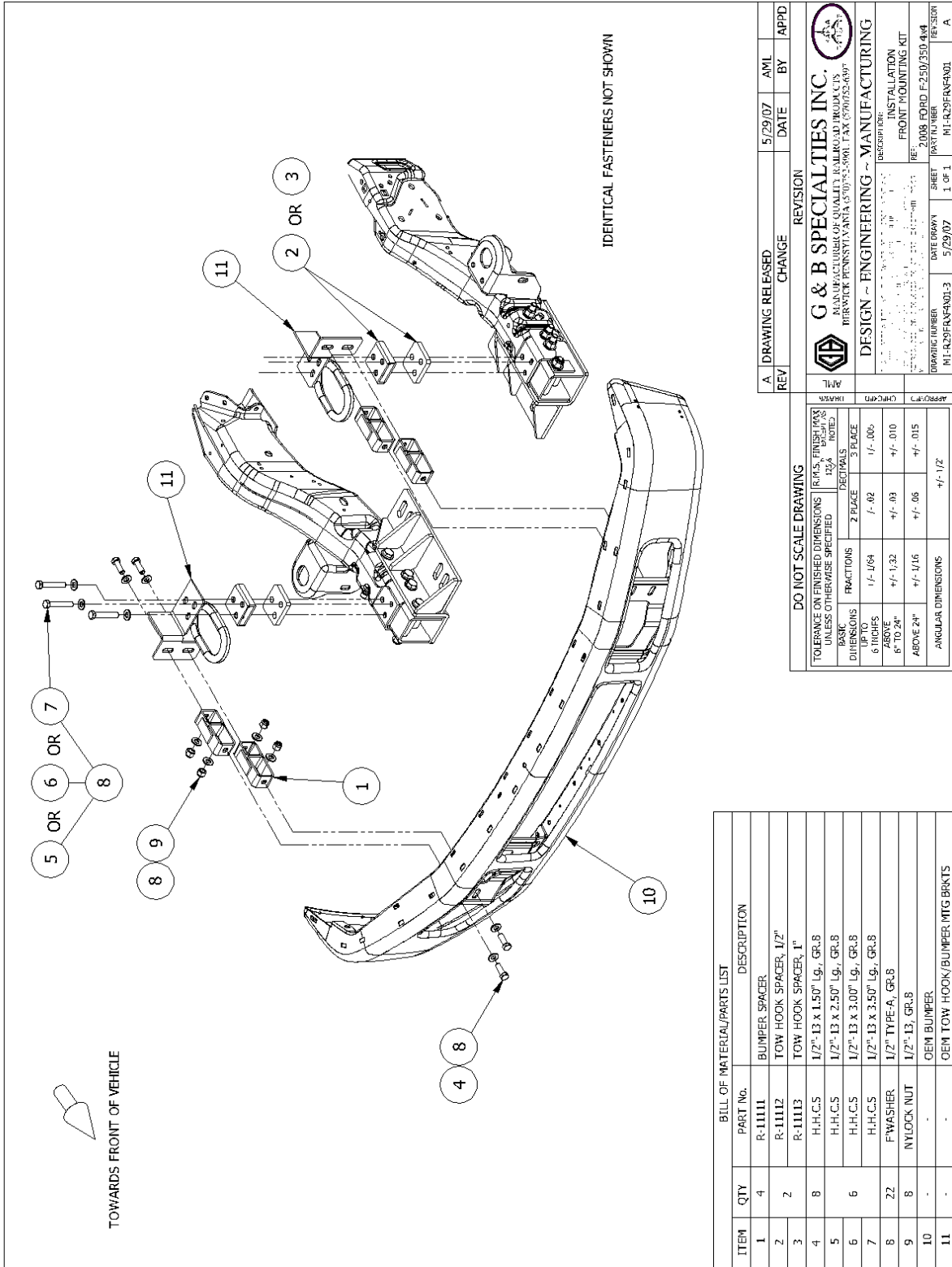
Parts of Front Mounting Kit

REV	CHANGE	DATE	AML	BY	APPD
A	DRAWING RELEASED	5/29/07			

	G & B SPECIALTIES INC. MANUFACTURER OF QUALITY RAILROAD PRODUCTS BERWICK PENNSYLVANIA (570) 752-5901 FAX (570) 752-6397
DESIGN ~ ENGINEERING ~ MANUFACTURING	DESCRIPTION ~ INSTALLATION
DRAWING NUMBER MTR-29FRXF4X01-2	PART NUMBER FRONT MOUNTING KIT
DATE 06/06/07	REV 2008 FORD F-250/350 4x4
SHEET 1 OF 1	REVISION MTR-29FRXF4X01 A

DO NOT SCALE DRAWING			
TOLERANCE ON FINISHED DIMENSIONS UNLESS OTHERWISE SPECIFIED	R.A.S. FINISHES TO A		NOTES
	FRACTIONS	DECIMALS	
2 PLACE	3 PLACE		
1/2 - 1/64	1/2 - .02	1/2 - .005	
ABOVE 6" TYP	+/- .132	+/- .03	+/- .010
ABOVE 24"	+/- .116	+/- .05	+/- .015
ANGULAR DIMENSIONS			+/- .12°

BILL OF MATERIAL/PARTS LIST		DESCRIPTION
ITEM	QTY	PART No.
1	1	R-11100D-A
2	1	R-11100P-A
3	2	R-12009-C
4	2	R-11109
5	8	H-H.C.S 5/8" - 11 x 6.00" Lg., GR.8
6	16	F'WASHER 5/8" TYPE-A, GR.8
7	8	NYLOCK NUT 5/8" - 11, GR.8
8	2	H-H.C.S 1/2" - 13 x 1.50" Lg., GR.8
9	2	F'WASHER 1/2" TYPE-A, GR.8



REV	CHANGE	DATE	AWL	BY	APPD
A	DRAWING RELEASED	5/29/07			

G & B SPECIALTIES INC. MANUFACTURER OF QUALITY RAILROAD PRODUCTS BERWICK, PENNSYLVANIA 15701-7524-9901 FAX (570) 752-6397	
DESIGN ~ ENGINEERING ~ MANUFACTURING	
DESCRIPTION: INSTALLATION FRONT MOUNTING KIT REF: 2008 FORD F250/350 4x4	
DRAWING NUMBER	MO-R29FRXF4X01-3
DATE DRAWN	5/29/07
SHEET	1 OF 1
REVISOR	REVISOR
	A

DO NOT SCALE DRAWING	
TOLERANCE ON FINISHED DIMENSIONS UNLESS OTHERWISE SPECIFIED	(R.M.S. FINISH) 12 GA. SHIPMENTS
BASIC DIMENSIONS	FRACTIONS
2 PLACE	3 PLACE
DECIMALS	
6 THIRDS	1/- .006
ABOVE 6" TO 24"	+/- .132
ABOVE 24"	+/- .116
ANGULAR DIMENSIONS	+/- .1/2

ITEM	QTY	PART NO.	DESCRIPTION
1	4	R-11111	BUMPER SPACER
2	2	R-11112	TOW HOOK SPACER, 1/2"
3		R-11113	TOW HOOK SPACER, 1"
4	8	H.H.C.S	1/2" x 1.50" Lg., GR.8
5		H.H.C.S	1/2" x 1.3 x 2.50" Lg., GR.8
6	6	H.H.C.S	1/2" x 1.3 x 3.00" Lg., GR.8
7		H.H.C.S	1/2" x 1.3 x 3.50" Lg., GR.8
8	22	F/WASHER	1/2" TYPE-A, GR.8
9	8	NYLOCK NUT	1/2" x 1.3, GR.8
10	-	-	OEM BUMPER
11	-	-	OEM TOW HOOK/BUMPER MTG BRKTS