



**OPERATION, SERVICE AND PARTS  
OF FRONT MOUNTING KIT  
2008 FORD F-450/550 4X4, 4X2**

**SAFETY PRECAUTIONS**

**If any operating, services or parts problems are encountered, please call G&B Specialties for technical assistance.**



- Failure to heed to any of the following warnings could result in severe bodily injury and/or equipment damage.
- Read and understand this manual completely before attempting operation of the railgear equipped vehicle.
- Operating instructions provided below only address the Rafna Industries railgear equipment. Applicable railway company procedures and policies must be adhered to.
- Railway company rules governing rail travel must be observed at all times.
- Before performing any work under the vehicle or railgear, ensure the engine is turned off and the parking brake is set.
- Never operate the vehicle if the Gross Vehicle Weight Rating (GVWR), Gross Axle Weight Rating Front or Rear (GAWR), or the wheel or tire load ratings are exceeded.



**OPERATION OF FRONT MOUNTING KIT**

With the front mounting kit installed on this vehicle, it may be operated as normal; however the front bumper is located further forward than standard. Side wands are located on the front bumper to aid in determining the length and width of the vehicle. Caution must be used when operating the vehicle.

Never operate the vehicle if the Gross Vehicle Weight Rating (GVWR), Gross Axle Weight Rating Front or Rear (GAWR), or the wheel or tire load ratings are exceeded.

**SERVICE OF FRONT MOUNTING KIT**

The front mounting kit must be serviced regularly to avoid damage to the equipment. Table 1 below provides the Recommended Service Schedule and Table 2 provides Standard Fastener Torque Values.

Table 1: Recommended Service Schedule

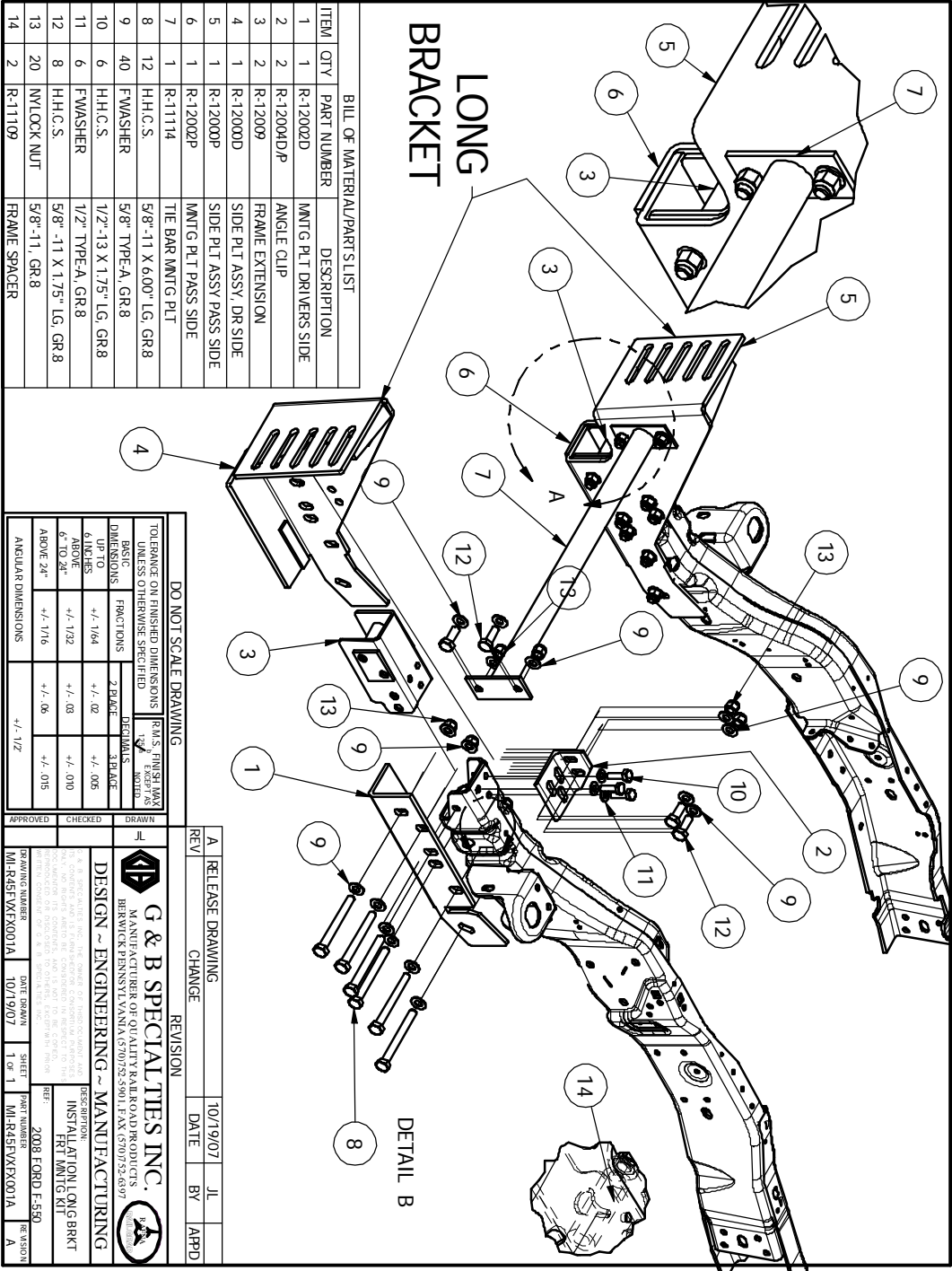
Service Required	Initial 62 miles (100 km) of road and/or rail use	Daily	Weekly	Monthly
Inspect front mounting kit fasteners (re-torque if required)		✓	✓	✓

Table 2: Standard Fastener Torque Values

Fastener Size	Fastener Torque Value (ft-lbs) Dry
1" UNC Gr. 8 Fasteners	250
3/4" UNC Gr. 8 Fasteners	175
5/8" UNC Gr. 8 Fasteners	150
1/2" UNC Gr. 8 Fasteners	100
1/2" UNC Gr. 2 Fasteners	35
3/8" UNC Gr. 8 Fasteners	40
1/4" UNC Gr. 8 Fasteners	12



Parts of Front Mounting Kit



ITEM	QTY	PART NUMBER	DESCRIPTION
1	1	R-12002D	MNTG. PLT DRIVERS SIDE
2	2	R-12004D/P	ANGLE CLIP
3	2	R-12009	FRAME EXTENSION
4	1	R-12000D	SIDE PLT ASSY. DR. SIDE
5	1	R-12001P	SIDE PLT ASSY. PASS. SIDE
6	1	R-12002P	MNTG. PLT PASS. SIDE
7	1	R-11114	THE BAR MNTG. PLT
8	12	H.H.C.S.	5/8"-11 X 6.00"-LG. GR.8
9	40	F.WASHER	5/8" TYPE-A, GR.8
10	6	H.H.C.S.	1/2"-13 X 1.75"-LG. GR.8
11	6	F.WASHER	1/2" TYPE-A, GR.8
12	8	H.H.C.S.	5/8"-11 X 1.75"-LG. GR.8
13	20	W/LOCK NUT	5/8"-11, GR.8
14	2	R-11109	FRAME SPACER

DO NOT SCALE DRAWING			
TOLERANCE ON FINISHED DIMENSIONS UNLESS OTHERWISE SPECIFIED		F.R.M.S. FINISH MARKS TO BE SHOWN	
BASIC DIMENSIONS	FRACTIONS	2 PLACE DECIMALS	3 PLACE DECIMALS
UP TO 6.00 IN.	+/- .1/64	+/- .02	+/- .005
6.00 TO 6.10 IN.	+/- .1/32	+/- .03	+/- .010
6.10 TO 6.20 IN.	+/- .1/16	+/- .06	+/- .015
ABOVE 24"	+/- .1/8	+/- .12	

APPROVED	CHECKED	DRAWN		
		JL		
 <b>G &amp; B SPECIALTIES INC.</b> MANUFACTURER OF QUALITY RAILROAD PRODUCTS BERWICK, PENNSYLVANIA (570)752-5901 FAX (570)752-6397				
DESIGN ~ ENGINEERING ~ MANUFACTURING				
DRAWING NUMBER: <b>MI-R45FVXF001A</b>				
DATE DRAWN: <b>10/19/07</b>				
SHEET: <b>1 OF 1</b>				
PART NUMBER: <b>MI-R45FVXF001A</b>				
REVISION: <b>A</b>				
REV	RELEASE DRAWING	DATE	BY	APPD
A	CHANGE	10/19/07	JL	

Figure 1

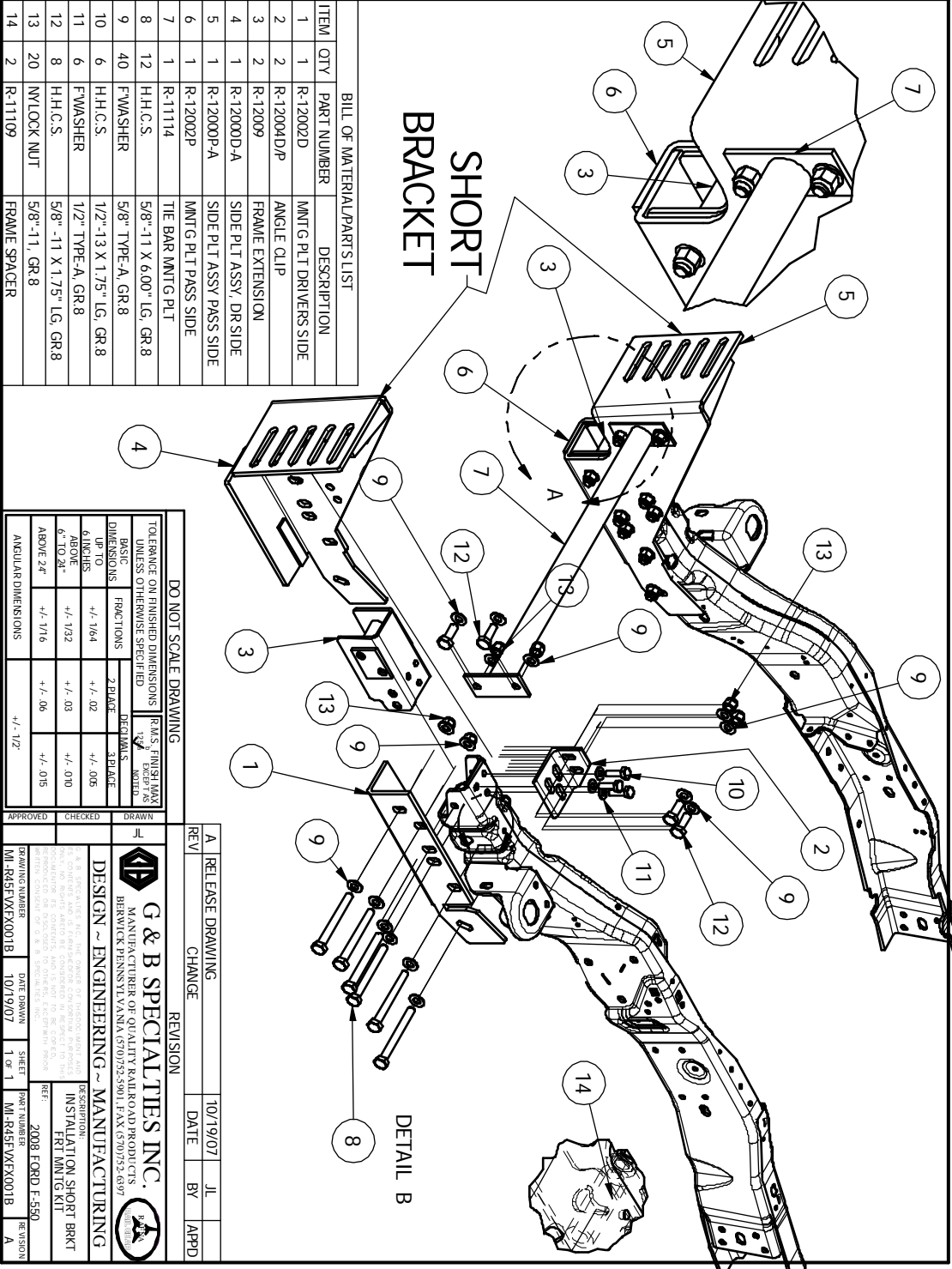


Figure 2