

## INSTALLATION OF R-290 FENDERS/GREASE GUARDS

### INSTALLATION SAFETY PRECAUTIONS

If any installation problems are encountered, please call G&B Specialties for technical assistance before continuing with the installation process.



- Failure to heed to any of the following warnings could result in severe bodily injury and/or equipment damage.
- Read and understand this manual completely before attempting installation of the equipment.
- Installation instructions provided below only address the Rafna railgear equipment. Applicable railway company procedures and policies must be adhered to.
- Before performing any work under the vehicle or railgear, ensure the engine is turned off and the parking brake is set.
- Ensure all removed components are given to the vehicle owner after the installation of the railgear. These components must be re-installed if the railgear is removed from the vehicle.
- Always disconnect the vehicle's battery when welding on the vehicle or railgear in order to protect the vehicle's electrical system.

**INSTALLATION OF FENDERS/GREASE GUARDS (TOP MOUNT SWEEPS)**

The following procedure details the installation of the fender/grease guards with top mounted rail sweeps. The hardware required for this installation is listed in Table 1.

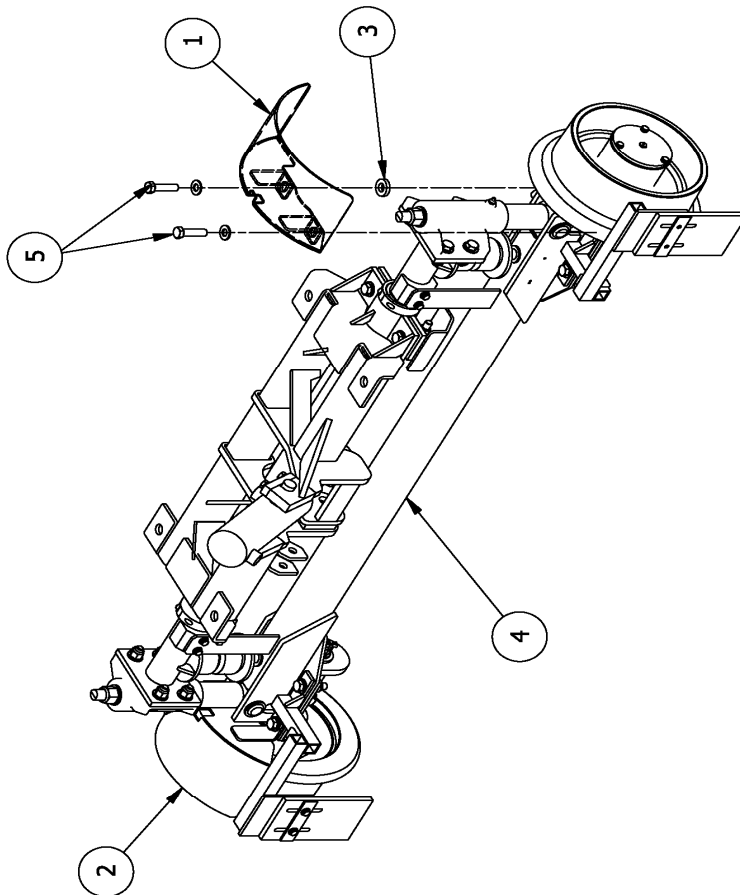
**Table 1: Kit Installation Parts**

Part Number	Description	Qty
R-20055D	Fender/Grease Guard, Drivers Side	2
R-20055P	Fender/Grease Guard, Passengers Side	2
R-20055W	Spacer	8

**\*Each kit contains all components/hardware for one vehicle (2 R-290 Units)\***

1. It is recommended that the railgear unit be installed on the vehicle and aligned, per the alignment procedure in the railgear operations manual, prior to installing the fender/grease guards.
2. Remove the two outermost 1/2" bolts and hardware used to attach the rail wheel to the railgear axle.
3. Place the Drivers side fender over the rail wheel so that the each of the fender mounting brackets rest on either side of the railgear axle.
4. The front mounting bracket should be resting on top of the rail sweep mounting plate.
5. Place the 1/4" spacer between the rear fender mounting bracket and the top of the wheel table mounting plate.
6. Reassemble using the existing hardware that was removed in step two.
7. Align the fender to the rail wheel. Ensure that the fender is clear of any railgear component interference.
8. Torque the 1/2" fasteners to 100 ft-lbs dry.
9. Repeat steps 2 thru 8 for the passenger side.

BILL OF MATERIAL/PARTS LIST			
ITEM	QTY	PART NUMBER	DESCRIPTION
1	1	R-20055D	FENDER/GREASE GUARD, DRIVERS SIDE
2	1	R-20055P	FENDER/GREASE GUARD, PASSENGERS SIDE
3	2	R-20055W	SPACER
4	REF	-	R-290 RAILGEAR UNIT
5	REF	-	EXISTING 1/2" WHEEL MOUNTING HARDWARE



REV	DESCRIPTION OF CHANGES	DATE	BY	APPRVD	ECN #	APPROVED	CHECKED	DATE DRAWN	PART NUMBER	REVISION
A	REVISION A RELEASED	04/28/09	AML	JMP					K-R29RRXR001	B
B	UPDATED BORDER	06/03/21	SMM						K-R29RRXR001	

**G & B SPECIALTIES INC.**  
A MAJOR SOURCE OF QUALITY FURNISHED PRODUCTS  
BERWICK, PENNSYLVANIA (570) 752-5901 FAX (570) 752-6397

DESIGN - ENGINEERING - MANUFACTURING

G & B SPECIALTIES INC. IS THE OWNER OF THIS DRAWING. IT IS TO BE USED ONLY FOR THE PURPOSES SPECIFIED HEREIN. NO PARTS ARE TO BE REPRODUCED OR COPIED WITHOUT THE WRITTEN CONSENT OF G & B SPECIALTIES INC.

SHEET/DRAWING NUMBER: 1 K-R29RRXR001 DATE DRAWN: 04/28/09 PART NUMBER: K-R29RRXR001 REVISION: B

**NOTES:**  
1. DRIVERS SIDE SHOWN  
PASSENGERS SIDE TYPICAL

**INSTALLATION OF FENDERS/GREASE GUARDS (BOTTOM MOUNT SWEEPS)**

The following procedure details the installation of the fender/grease guards with bottom mounted rail sweeps. The hardware required for this installation is listed in Table 1.

**Table 1: Kit Installation Parts**

Part Number	Description	Qty
R-20055D	Fender/Grease Guard, Driver's Side	2
R-20055P	Fender/Grease Guard, Passenger's Side	2
R-20055W	Spacer	8
R-990KIT-123	H.H.C.S, 1/2" UNC Gr.8 x 2.25" Lg	8
	Nyloc Nut, 1/2" UNC Gr.8	8

**\*Each kit contains all components/hardware for one vehicle (2 R-290 Units)\***

1. It is recommended that the railgear unit be installed on the vehicle and aligned, per the alignment procedure in the railgear operations manual, prior to installing the fender/grease guards.
10. Remove the two outermost 1/2" bolts and hardware used to attach the rail wheel to the railgear axle.
11. Place the driver's side fender over the rail wheel so that the each of the fender mounting brackets rest on either side of the railgear axle.
12. Place the 1/4" spacer between both fender mounting brackets and the top of the wheel table mounting plate.
13. Reassemble using the 1/2" hardware found in the supplied hardware kit.
14. Align the fender to the rail wheel. Ensure that the fender is clear of any railgear component interference.
15. Torque the 1/2" fasteners to 100 ft-lbs dry.
16. Repeat steps 2 thru 8 for the passenger side.

BILL OF MATERIAL/PARTS LIST			
ITEM	QTY	PART NUMBER	DESCRIPTION
1	2	R-20055D	FENDER/GREASE GUARD, DRIVERS SIDE
2	2	R-20055P	FENDER/GREASE GUARD, PASSENGERS SIDE
3	8	R-20055W	SPACER
4	REF	-	R-290 RAILGEAR UNIT
5	REF	-	EXISTING 1/2" WHEEL MOUNTING HARDWARE
6	8	H.H.C.S	1/2" UNC GR.8 x 2.25" Lg
7	8	NYLOCK NUT	1/2" UNC Gr 8

REV	DESCRIPTION OF CHANGES	DATE	BY	APPRVD	ECN #
A	REVISION A RELEASED	07/14/10	JMP		
B	REVISED BOLTS	08/20/10	JMP		
C	REVISED BOM	07/18/13	AML		
D	UPDATED BORDER	06/03/21	SMM	JMP	

APPROVED	CHECKED	DRAWN	DESIGN	DATE DRAWN	PART NUMBER	REVISION
1	1	1	1	07/14/10	K-R29RRXR002	D

**NOTES:**

1. DRIVER'S SIDE SHOWN
- PASSENGER'S SIDE TYPICAL
2. ITEM 6 & 7 ARE A PART OF R-990KIT-123