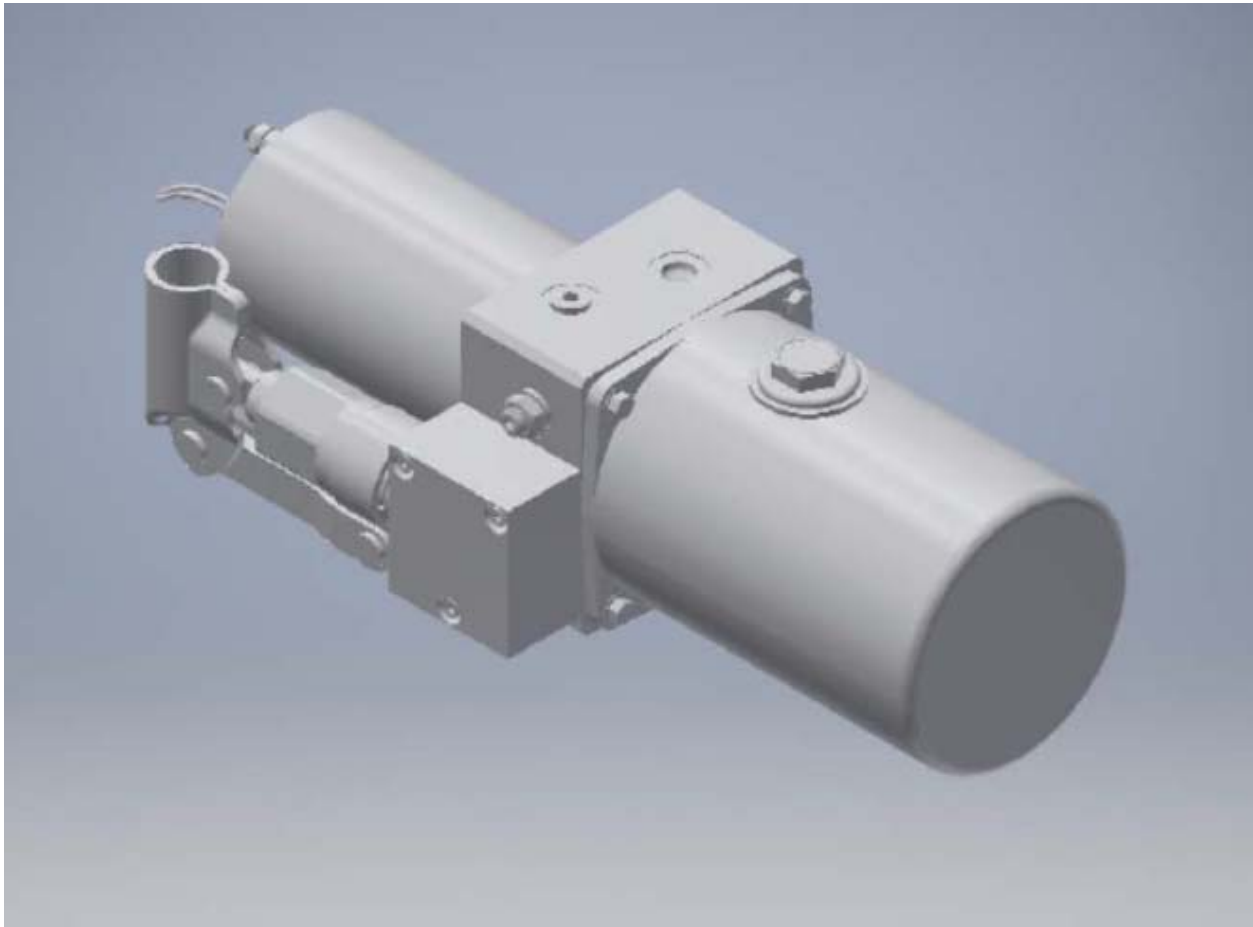


IDENTIFICATION OF
S-003041 HYDRAULIC PUMP
AND ITS MOUNTING KIT

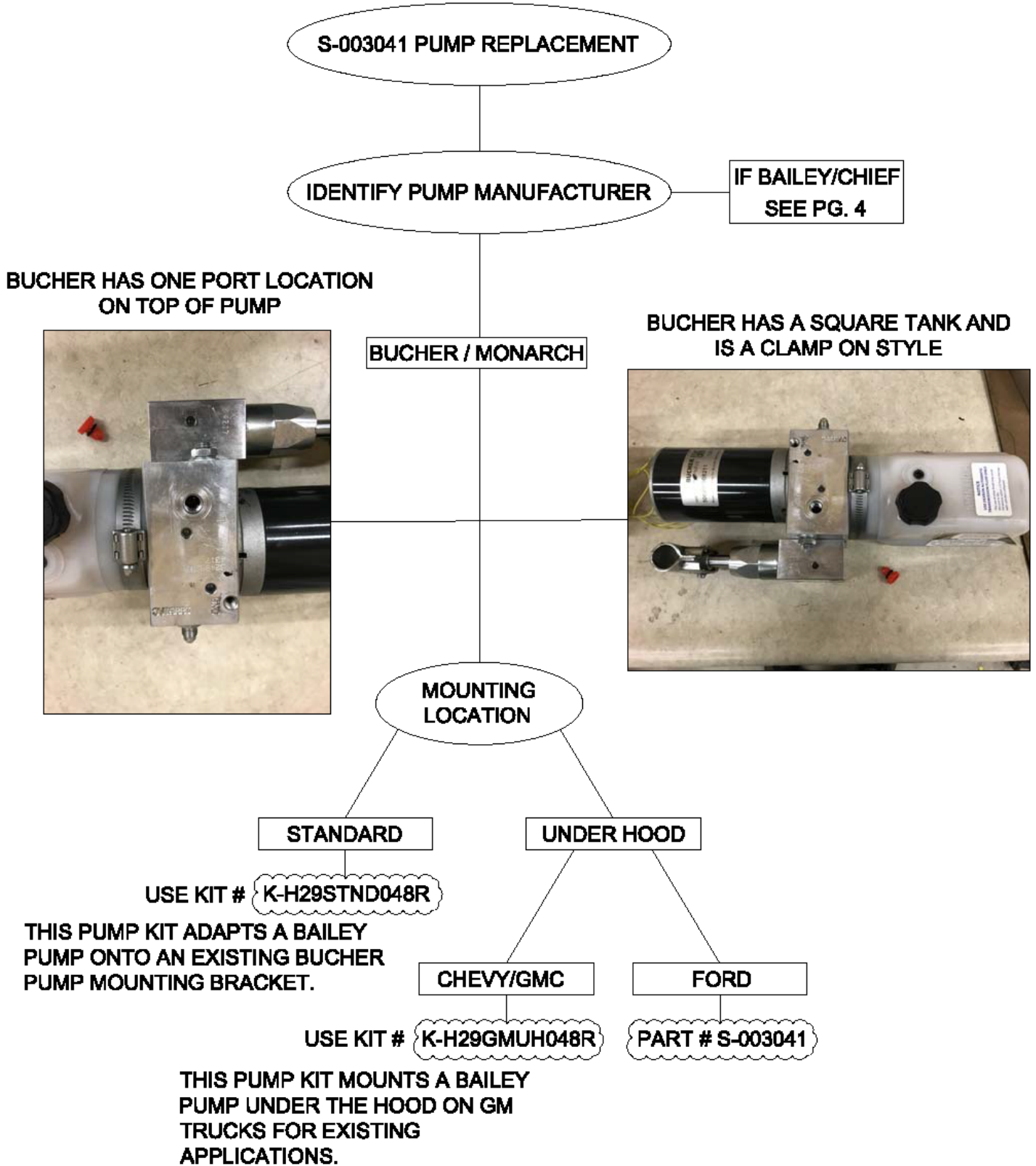


SAFETY PRECAUTIONS

If any installation problems are encountered, please call G&B Specialties for technical assistance before continuing with the installation process.



- Failure to heed to any of the following warnings could result in severe bodily injury and/or equipment damage.
- Read and understand this manual completely before attempting installation or operation of the equipment.
- Installation/Operation instructions provided below only address the Rafna railgear equipment. Applicable railway company procedures and policies must be adhered to.
- Before performing any work under the vehicle or railgear, ensure the engine is turned off and the parking brake is set.
- When routing hydraulic hoses, ensure that the hoses do not contact any sharp edges or hot surfaces.
- When routing electrical wires, ensure that the wires do not contact any sharp edges or hot surfaces.
- All wire connections are to be soldered and heat shrink sealed to prevent future corrosion related problems.
- All wires must be covered with protective cable loom.
- Railway company rules governing rail travel must always be observed.
- Ensure all body parts and loose clothing are clear of any moving parts of the railgear. Be aware of all pinch points.
- Note that if the railgear is part way retracted or extended, opening the manifold directional valve manual over-rides may cause the railgear to drop suddenly causing personal injury. Ensure all body parts are clear of the railgear if it should suddenly drop.
- When operating the railgear using the emergency hand pump, ensure that the correct manual valve over-ride is open for the desired railgear (front or rear) and desired direction of operation (raise or lower).
- Do not use the emergency hand pump to raise and lower the railgear on a routine basis. If the hydraulic pump or manifold should fail, have it repaired as soon as possible.
- If the emergency hand pump has been used to raise or lower the railgear, ensure the manifold directional valve manual over-rides are in the closed and locked position before starting road or rail travel.
- Ensure the hydraulic pump has been de-energized before starting road or rail travel.



CONTINUED FROM PG. 3

BAILEY HAS BOTH PORT LOCATIONS
ON TOP OF PUMP



BAILEY / CHIEF

BAILEY HAS A ROUND TANK AND
IS A BOLT ON STYLE



MOUNTING
LOCATION

STANDARD

PART # S-003041

UNDER HOOD

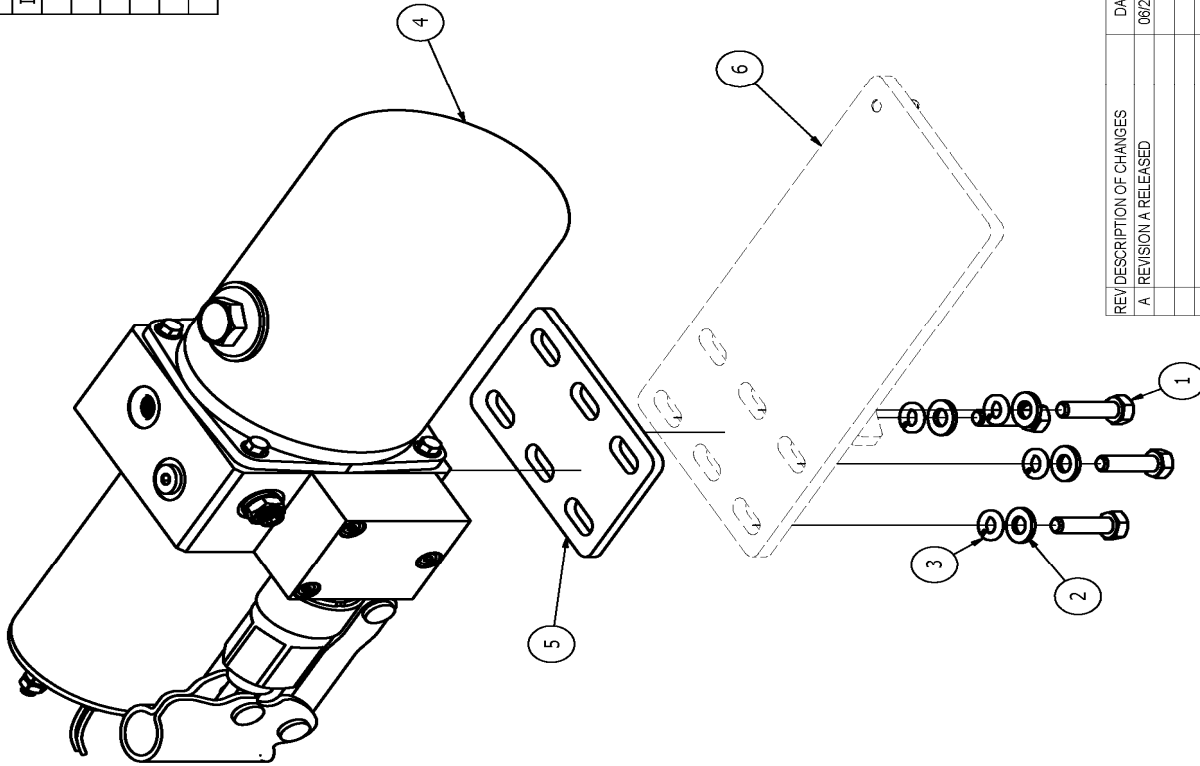
CHEVY/GMC

PART # S-003041

FORD

PART # S-003041

PARTS LIST			
ITEM	QTY	PART NUMBER	DESCRIPTION
1	4	990723-100-12	SCREW, 5/16" X 1" HEX CAP Z/Y
2	4	990600-031-002	WASHER, 5/16" NARROW FLAT Z/Y
3	4	990401-031-02	WASHER, 5/16" REG LOCK Z/Y
4	1	S-003041	HYDRAULIC PUMP ASSEMBLY (BAILEY)
5	1	R-2965D	SHIM PLATE FOR HYDRAULIC PUMP
6	REF	REUSE EXISTING	BRACKET, BUCHER PUMP MOUNTING (R-2965)



NOTES
1. THIS PUMP KIT ADAPTS A BAILEY PUMP ONTO AN EXISTING BUCHER PUMP MOUNTING BRACKET.

REV	DESCRIPTION OF CHANGES	DATE	BY	APPRVD	ECN #
A	REVISION A RELEASED	08/27/19	SMMI	JMP	

G & B SPECIALTIES INC.
MANUFACTURER OF QUALITY RAILROAD PRODUCTS
BERWICK, PENNSYLVANIA (570) 752-5901, FAX (570) 752-6397

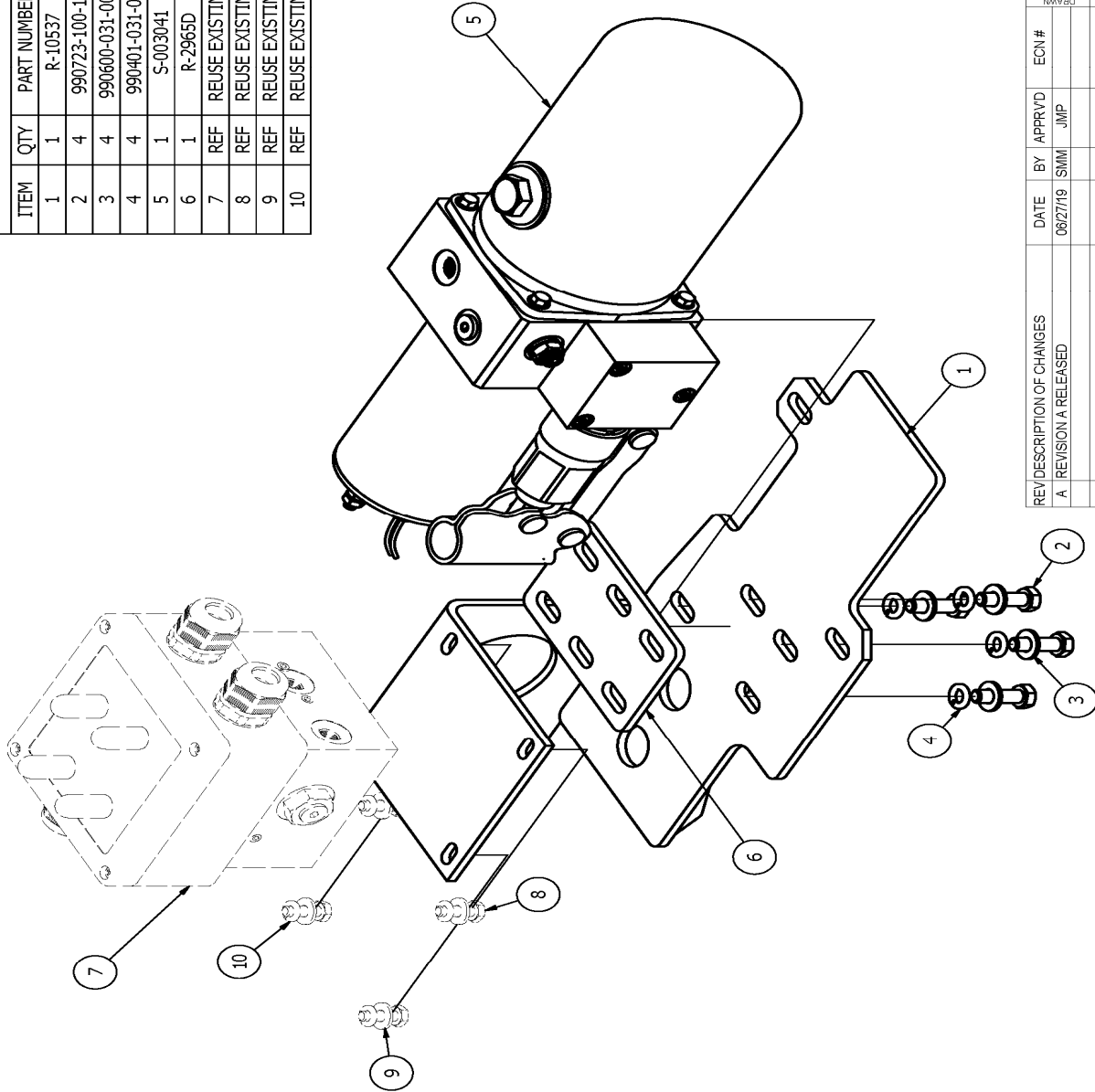
DESIGN - ENGINEERING - MANUFACTURING

PUMP MOUNTING ASSEMBLY

DATE DRAWN: 08/27/19
PART NUMBER: K-H29STND048R
REVISION: A

ALL WELDS TO CONFORM TO AWS D1.1

PARTS LIST			
ITEM	QTY	PART NUMBER	DESCRIPTION
1	1	R-10537	BRACKET, PUMP MNTG
2	4	990723-100-12	SCREW, 5/16" X 1" HEX CAP Z/Y
3	4	990600-031-002	WASHER, 5/16" NARROW FLAT Z/Y
4	4	990401-031-02	WASHER, 5/16" REG LOCK Z/Y
5	1	S-003041	HYDRAULIC PUMP ASSEMBLY (BAILEY)
6	1	R-2965D	PLATE, SHIM
7	REF	REUSE EXISTING	MANIFOLD ASSEMBLY
8	REF	REUSE EXISTING	SCREW, 1/4" X 3/4" HEX CAP Z/Y
9	REF	REUSE EXISTING	WASHER, 1/4" NARROW FLAT Z/Y
10	REF	REUSE EXISTING	WASHER, 1/4" REG LOCK Z/Y



NOTES
1. THIS PUMP KIT MOUNTS A BAILEY PUMP UNDER THE HOOD ON GM TRUCKS FOR EXISTING APPLICATIONS.

REV	DESCRIPTION OF CHANGES	DATE	BY	APPRVD	ECN #	DRWN
A	REVISION A RELEASED	06/27/19	SMM	JMP		SMM

G & B SPECIALTIES INC.
MANUFACTURER OF QUALITY RAILROAD PRODUCTS
BERWICK, PENNSYLVANIA (570) 752-5901, FAX (570) 752-6397

DESIGN - ENGINEERING - MANUFACTURING

PUMP & MANIFOLD MNTG ASSY

1 K-H29GMU048R 06/27/19 K-H29GMU048R A

ALL WELDS TO CONFORM TO AWS D1.1