

INSTALLATION OF FRONT MOUNTING KIT
2007 - 2014 CHEVY SUBURBAN
2017 - 2019 CHEVY SUBURBAN HD

INSTALLATION SAFETY PRECAUTIONS

If any installation problems are encountered, please call G&B Specialties for technical assistance before continuing with the installation process.



- Failure to heed to any of the following warnings could result in severe bodily injury and/or equipment damage.
- Read and understand this manual completely before attempting installation of the equipment.
- Installation instructions provided below only address the RAFNA railgear equipment. Applicable railway company procedures and policies must be adhered to.
- Before performing any work under the vehicle or railgear, ensure the engine is turned off and the parking brake is set.
- Do not start the vehicle with the power steering hoses disconnected. Reconnect all hoses and secure the power steering cooler if the vehicle is started.
- Ensure all removed components are given to the vehicle owner after the installation of the railgear. These components must be re-installed if the railgear is removed from the vehicle.
- Always disconnect the vehicle's battery when welding on the vehicle or railgear to protect the vehicle's electrical system.
- Railway Company rules governing rail travel must be observed at all times.
- Never operate the vehicle if the Gross Vehicle Weight Rating (GVWR), Gross Axle Weight Rating Front or Rear (GAWR), or the wheel or tire load ratings are exceeded.

INSTALLATION OF FRONT MOUNTING KIT

The following procedure details the installation of the front mounting kit. The hardware required for this installation is listed in either Table 1 or Table 2.

Table 1: K-M29RXGF003 Front Mounting Kit for 2007-2014 Suburban Installation Parts

Part Number	Description	Qty
R-2962D	Front Mounting Plate Left Side	1
R-2962P	Front Mounting Plate Right Side	1
R-2960	Railgear Mounting Shim - 1/2" Thick	4
R-990KIT-112	1/2" UNC Gr. 8 Bolt x 1 3/4" Long	8
	1/2" Gr. 8 Washer	16
	1/2" UNC Gr. 8 Nylon Insert Lock Nut	8
	3/4" UNC Gr. 8 Bolt x 2 1/2" Long	4
	3/4" UNC Gr. 8 Bolt x 3 1/2" Long	4
	3/4" UNC Gr. 8 Bolt x 4 1/2" Long	4
	3/4" UNC Gr. 8 Bolt x 5 1/2" Long	4
	3/4" Gr. 8 Washer	8
	3/4" UNC Gr. 8 Nylon Insert Lock Nut	4

Table 2: K-M29RXGF005 Front Mounting Kit for 2017-2019 Suburban HD Installation Parts

Part Number	Description	Qty
R-2991D	Front Mounting Plate Left Side	1
R-2991P	Front Mounting Plate Right Side	1
R-2960	Railgear Mounting Shim - 1/2" Thick	4
R-990KIT-127	1/2" UNC Gr. 8 Bolt x 5" Long	2
	1/2" UNC Gr. 8 Bolt x 1 3/4" Long	8
	1/2" Gr. 8 Washer	16
	1/2" UNC Gr. 8 Nylon Insert Lock Nut	8
	3/4" UNC Gr. 8 Bolt x 2 1/2" Long	4
	3/4" UNC Gr. 8 Bolt x 3 1/2" Long	4
	3/4" UNC Gr. 8 Bolt x 4 1/2" Long	4
	3/4" UNC Gr. 8 Bolt x 5 1/2" Long	4
	3/4" Gr. 8 Washer	8
		3/4" UNC Gr. 8 Nylon Insert Lock Nut

1. Remove front bumper plastic and grille; remove "Z" braces from underneath bumper and front tow hooks if so equipped. Retain fasteners for re-installation. The tow hooks will not be re-installed.
2. Remove the lower air cowling from under the radiator. The air cowling will not be re-installed.
3. Remove the skid plate from the front frame cross member. The skid plate will not be re-installed.

4. Position the front mounting plates on the inner side of the frame as shown so that the front frame cross member (round tube) is cradled tightly by the small square bars welded to the front mounting plates. It is imperative that the front mounting plates are tight against the bottom of the front frame cross member.
5. Ensure the mounting plate lower surfaces are 0° to the horizontal with the vehicle in the typical road position and aligned with each other. Grind or shim the front mounting plates as required to match the contour of the inner side of the frame rails. It may be necessary to grind off the lower edge of the front bumper-mounting bracket, which is welded to the front of the frame. It may be necessary to relocate brake and/or transmission lines, etc. Clamp the front mounting plates in position. Ensure that there is no interference with other vehicle components.
6. Mark the location of the original front tow hook mounting holes onto the front mounting plates. Mark the location of the three holes in each front mounting plate onto the inner side of the frame rails. Unclamp and remove the front mounting plates.
7. Drill 17/32" holes in the inner side of the frame rails and the front mounting plates where marked in the previous step.
8. Reposition and fasten each front mounting plate onto the frame with four 1/2" x 1 3/4" long bolts, eight 1/2" washers, and four 1/2" nuts. To access the rear most nut inside the frame, it may be necessary to enlarge the slot on the opposite side wall of the frame to get a socket inside.
9. Ensure the front mounting plates are tight against the inner side of the frame and the underside of the front frame cross member and that the mounting plate lower surfaces are 0° to the horizontal. Torque all the 1/2" fasteners to 100 ft-lbs dry. Do not over torque.
10. The supplied railgear mounting shims are to be used as required when mounting the railgear to the front mounting plates.

Note:

Following the installation of the front railgear, the front bumper plastic and cover/grille assembly must be re-installed on vehicle. The bumper cover will need to be trimmed to fit around the railgear as outlined in the railgear installation manual.

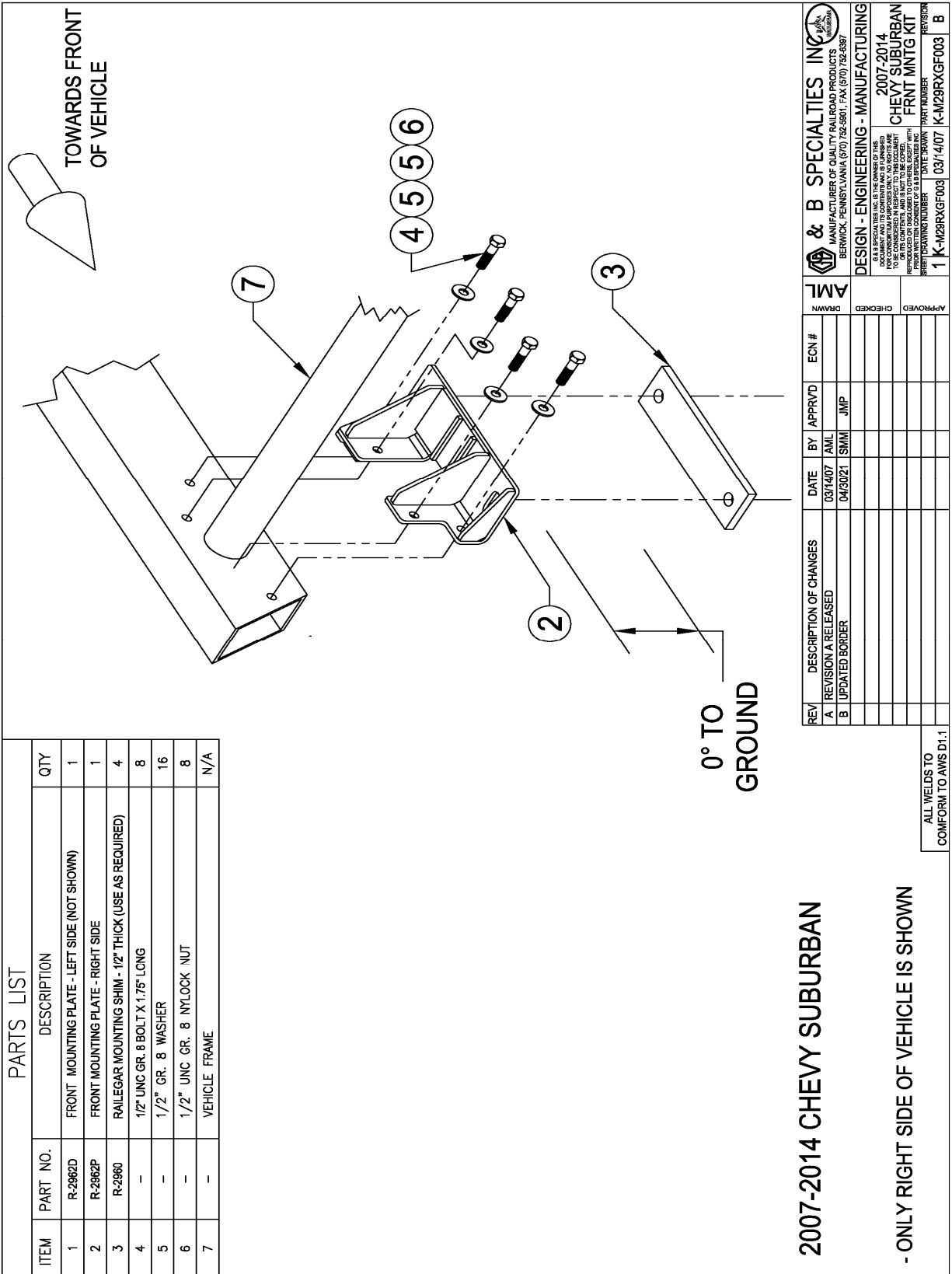


Figure 1

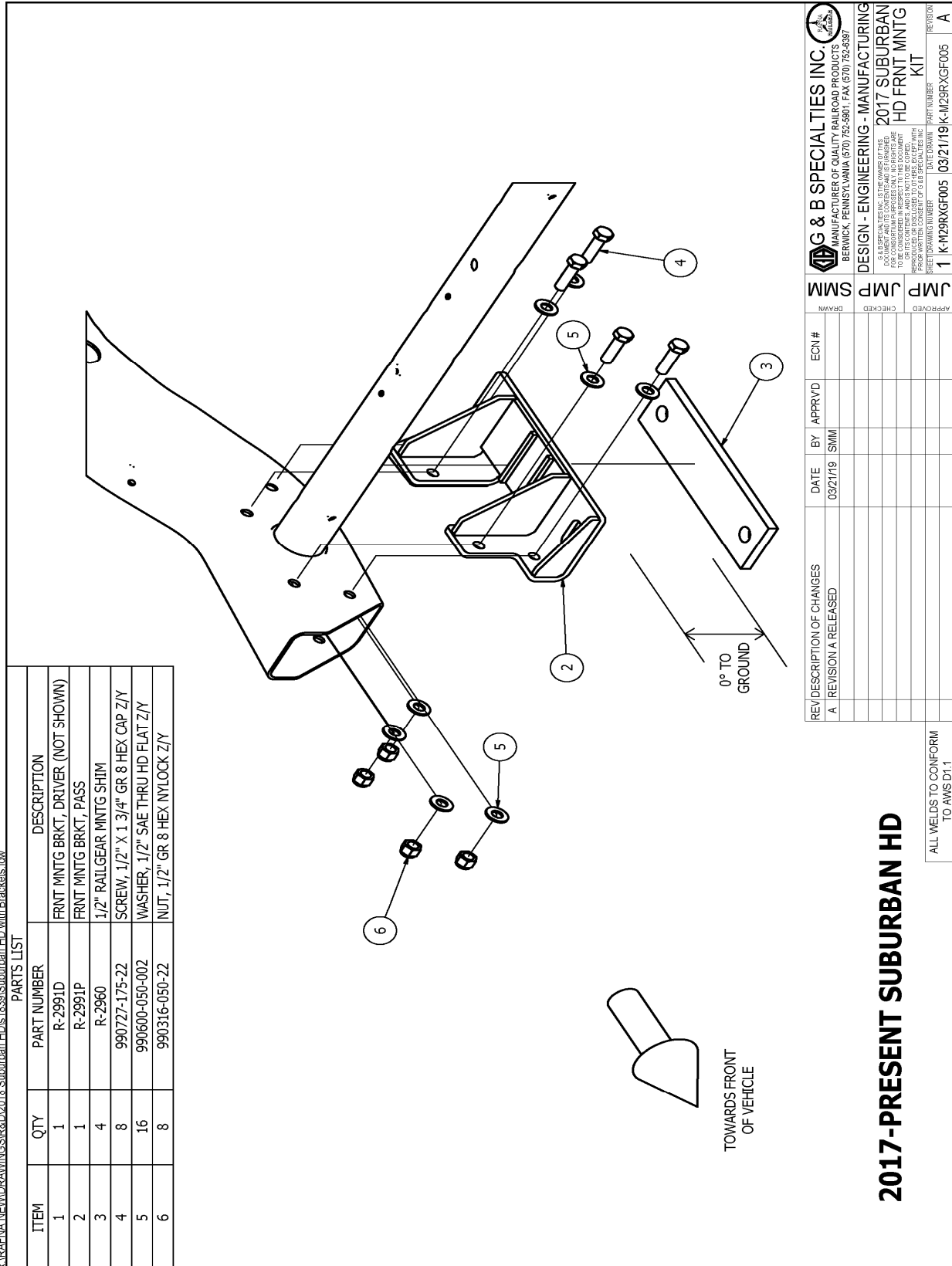


Figure 2

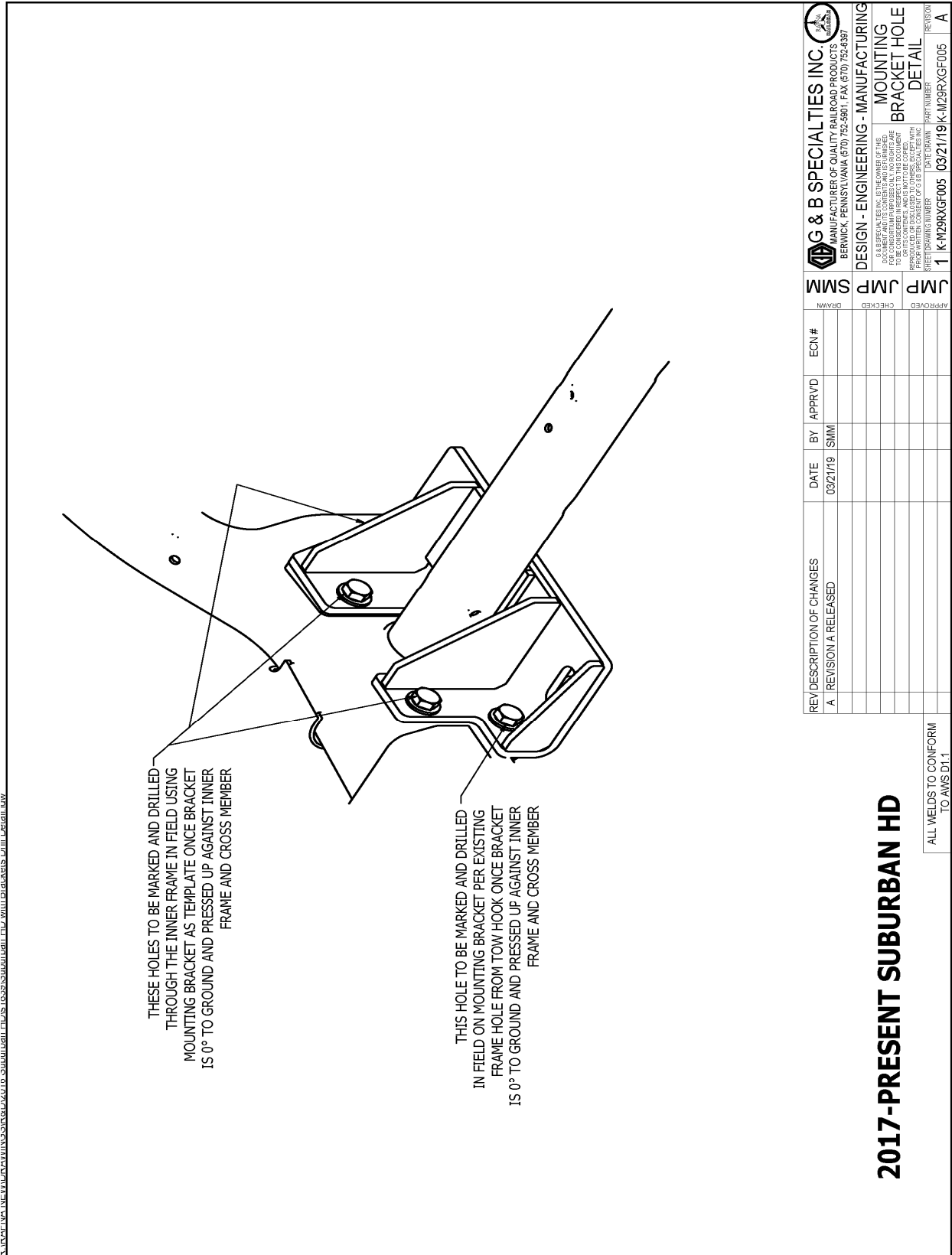


Figure 3

OPERATION, SERVICE AND PARTS OF FRONT MOUNTING KIT
2007 - 2014 CHEVY SUBURBAN
2017 - 2019 CHEVY SUBURBAN HD

OPERATION SAFETY PRECAUTIONS

If any operating, services or parts problems are encountered, please call G&B Specialties for technical assistance.



- Failure to heed to any of the following warnings could result in severe bodily injury and/or equipment damage.
- Read and understand this manual completely before attempting operation of the railgear equipped vehicle.
- Operating instructions provided below only address the RAFNA railgear equipment. Applicable railway company procedures and policies must be adhered to.
- Railway Company rules governing rail travel must be observed at all times.
- Before performing any work under the vehicle or railgear, ensure the engine is turned off and the parking brake is set.
- Never operate the vehicle if the Gross Vehicle Weight Rating (GVWR), Gross Axle Weight Rating Front or Rear (GAWR), or the wheel or tire load ratings are exceeded.

OPERATION OF FRONT MOUNTING KIT

With the front mounting kit installed on this vehicle, it may be operated as normal, but caution must always be used when operating the vehicle.

Never operate the vehicle if the Gross Vehicle Weight Rating (GVWR), Gross Axle Weight Rating Front or Rear (GAWR), or the wheel or tire load ratings are exceeded.

SERVICE OF FRONT MOUNTING KIT

The front mounting kit must be serviced regularly to avoid damage to the equipment. Table 1 below provides the Recommended Service Schedule and Table 2 provides Standard Fastener Torque Values.

Table 1: Recommended Service Schedule

Service Required	Initial 100 km (62 Miles) of road and/or rail use	Daily	Weekly	Monthly
Inspect front mounting kit fasteners (re-torque if required)		✓	✓	✓

Table 2: Standard Fastener Torque Values

Fastener Size	Fastener Torque Value (ft-lbs) Dry
1" UNC Gr. 8 Fasteners	250
3/4" UNC Gr. 8 Fasteners	175
5/8" UNC Gr. 8 Fasteners	150
1/2" UNC Gr. 8 Fasteners	100
3/8" UNC Gr. 8 Fasteners	40
1/4" UNC Gr. 8 Fasteners	12