

## INSTALLATION OF R-450 STEERING WHEEL LOCK ALL VEHICLES

### INSTALLATION SAFETY PRECAUTIONS

If any installation problems are encountered, please call G&B Specialties, Inc. for technical assistance before continuing with the installation process.



- Failure to heed to any of the following warnings could result in severe bodily injury and/or equipment damage.
- Read and understand this manual completely before attempting installation of the equipment.
- Installation instructions provided below only address the Rafna railgear equipment. Applicable railway company procedures and policies must be adhered to.
- Ensure the areas where the adhesive back strips will be affixed are clean, and free of dirt and grease. Do not touch these areas or the adhesive on the back of the strips.
- Wait a minimum of 24 hours for the adhesive strips to fully cure before using the steering wheel lock.
- Ensure that the steering wheel lock does not interfere with any vehicle devices including the air bags.

**INSTALLATION OF STEERING WHEEL LOCK****Table 1: Steering Wheel Lock Parts List (K-SXXXXX00450)**

Part Number	Description	Qty
S-001050	Steering Wheel Lock	1
S-001040	Steering Wheel Lock Decal	1
R-21164	Speed Decal	1

1. Ensure the front wheels are pointing straight ahead and the steering wheel is centered before installation.
2. The steering wheel lock consists of one steering wheel lock patch with Rafna logo and three adhesive back strips.
3. Without removing the protective backing, position one adhesive back strip on top of the steering column cover and another on the steering wheel. The strips should be close enough together so that the patch will cover both when the steering wheel lock is engaged. Ensure that the adhesive back strips do not interfere with any devices, such as the hazard light button on the steering column cover or the air bag cover on the steering wheel. Modify the adhesive back strips as required to clear any obstructions. Mark their locations on the steering column cover and the steering wheel.
4. Without removing the protective backing, position the third adhesive back strip in a convenient location on the dash (so that it does not interfere with the view and/or operation of the vehicle). This adhesive back strip will serve as a holder when the steering wheel lock is disengaged. Mark the location.
5. Scuff the three areas previously marked with medium / fine sand paper. The areas should be free of dust, dirt, and any oily residue. Thoroughly clean the areas with denatured alcohol or a similar non-oil based degreaser that will not react with the plastic. Let dry.
6. Take care when placing the adhesive back strips; once they are applied, they should not be removed. Do not touch the adhesive with your fingers. Removing the adhesive back strips once installed or touching the adhesive may cause poor adhesion.
7. Peel off the protective backing from the adhesive back strips. Firmly press them into place as previously located. Do not disturb the adhesive back strips for 24 to 30 hours to allow the adhesive to fully cure.
8. Store the steering wheel lock patch on the adhesive back strip located on the dash.
9. Stick the steering wheel lock decal in a highly visible spot on the dashboard.
10. Stick the maximum speed decal in a highly visible spot, within clear sight of the operator, on the dashboard.

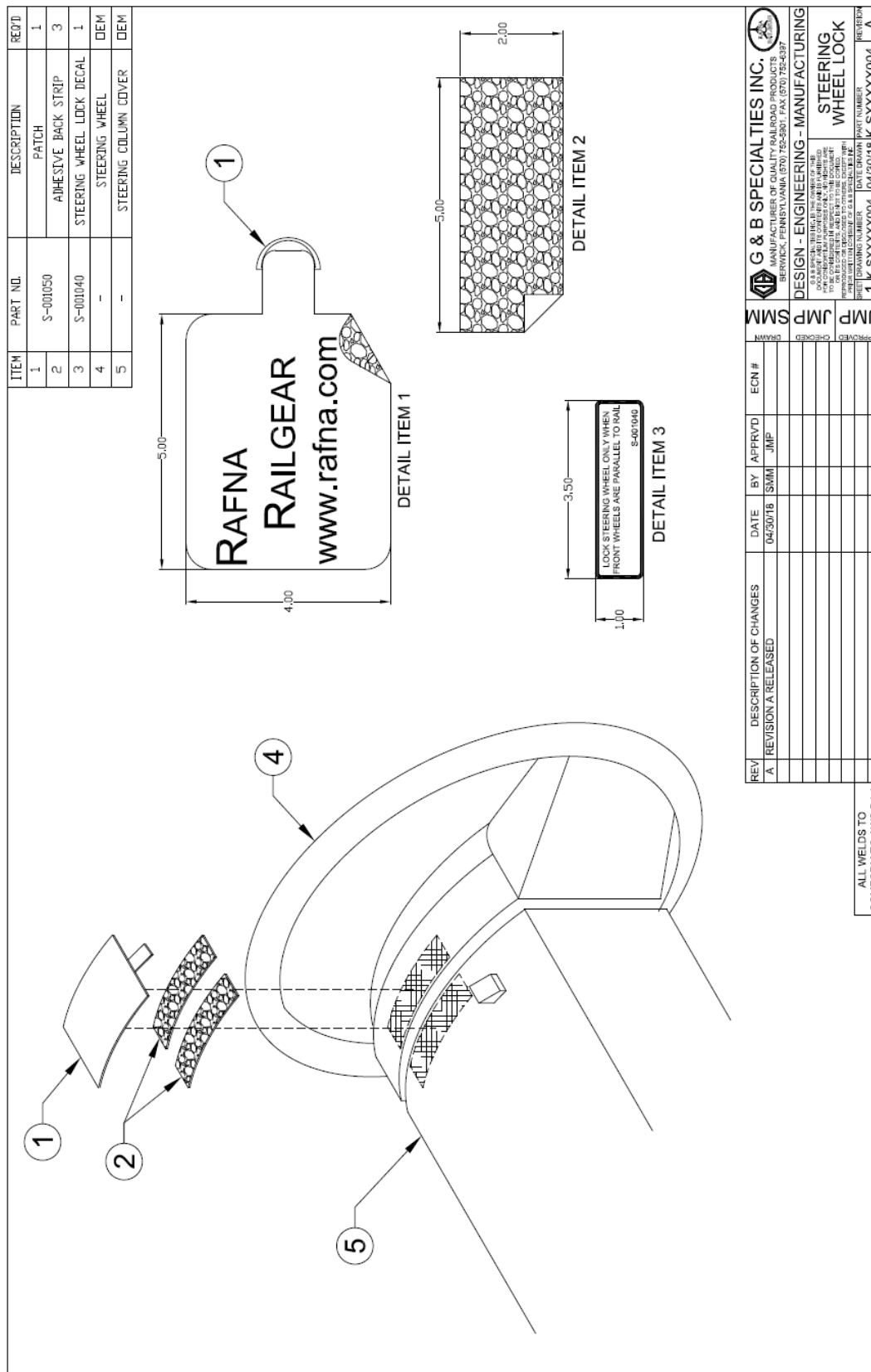


Figure 1

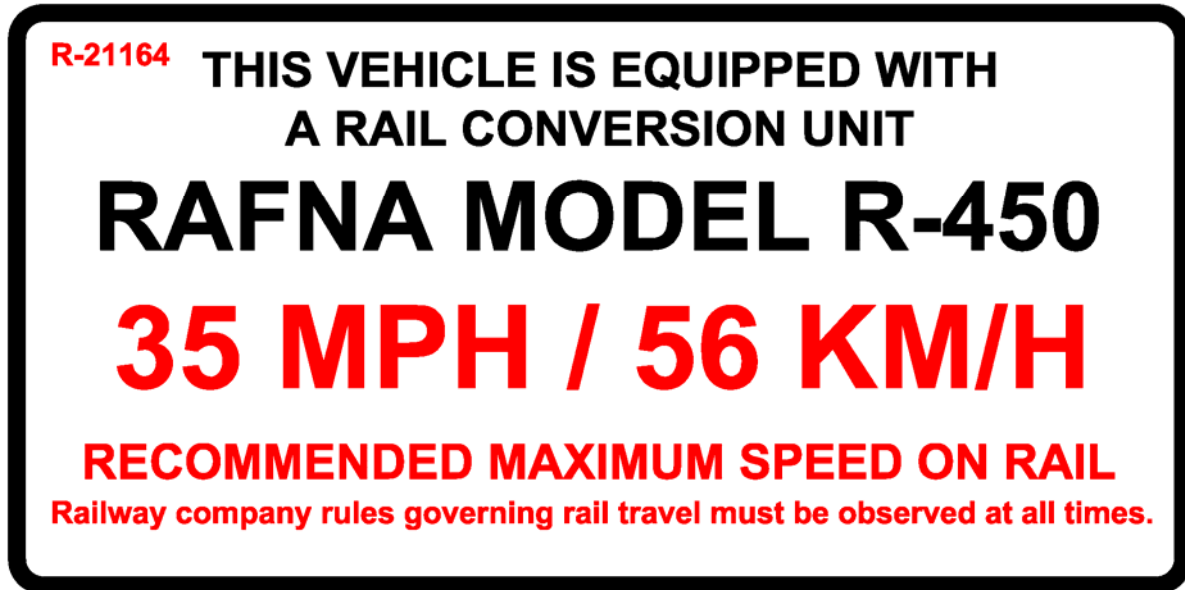


Figure 2

## OPERATION OF R-450 STEERING WHEEL LOCK ALL VEHICLES

### OPERATION SAFETY PRECAUTIONS

If any operating, services or parts problems are encountered, please call G&B Specialties, Inc. for technical assistance.



- Failure to heed to any of the following warnings could result in severe bodily injury and/or equipment damage.
- Read and understand this manual completely before attempting operation of the railgear equipped vehicle.
- Operating instructions provided below only address the RAFNA railgear equipment. Applicable railway company procedures and policies must be adhered to.
- Railway company rules governing rail travel must be observed at all times.
- At level rail crossings, ensure that no other vehicles are approaching and flag the crossing to ensure safety. This vehicle will not operate crossing signals. Use caution when approaching and traversing level crossings.
- The steering wheel lock must be engaged at all times while on rail.

## OPERATION OF STEERING WHEEL LOCK

The following procedure details the steering wheel lock operation.

### 1. Placing the Vehicle On The Track:

- a. Engage the steering wheel lock after both the front and rear railgear are fully deployed and prior to rail travel.
- b. Turn the steering wheel until the front tires point straight ahead.
- c. Position the patch portion of the steering wheel lock onto the adhesive back strips affixed to the steering wheel and steering column cover. Press firmly into place. When installed on the adhesive back strips the patch should restrict the steering wheel from turning.

### 2. Traveling on Rail:

- a. The steering wheel lock must be engaged at all times while on rail.

### 3. Removing the Vehicle From The Track:

- a. Disengage the steering wheel lock after both the front and rear Railgear are fully retracted in the road position and prior to road travel.
- b. Firmly grasp the steering wheel lock patch's d-ring and peel it off the adhesive back strips.
- c. Store the patch on the adhesive back strip which serves as the holder located on the dash.

## SERVICE OF STEERING WHEEL LOCK

Take care when removing the Patch. Due to certain plasticizers in the steering wheel steering column cover and dash, along with the vehicle's operating environment, the adhesive back strips may peel off and be removed. If the adhesive back strips do peel off, replace the strips with new ones at the earliest convenience.