

**INSTALLATION OF FRONT MOUNTING KIT  
2013-2016 FORD RANGER - MEXICO****SAFETY PRECAUTIONS**

If any installation problems are encountered, please call G&B Specialties, Inc. for technical assistance before continuing with the installation process.



- Failure to heed to any of the following warnings could result in severe bodily injury and/or equipment damage.
- Read and understand this manual completely before attempting installation of the equipment.
- Installation instructions provided below only address the Rafna railgear equipment. Applicable railway company procedures and policies must be adhered to.
- Before performing any work under the vehicle or railgear, ensure the engine is turned off and the parking brake is set.
- Ensure all removed components are given to the vehicle owner after the installation of the railgear. These components must be re-installed if the railgear is removed from the vehicle.
- Following the Railgear installation, the truck box and rear bumper will fit into its original position.



**INSTALLATION OF FRONT MOUNTING KIT**

The following procedure details the installation of the front mounting kit. The hardware required for this installation is listed below.

Part Number	Description	Qty
R-31250D	Front Mtg Brkt, Ds	1
R-31250P	Front Mtg Brkt, Ps	1
R-31256	Bottom Plate	2
R-31257	Side Plate	2
R-31259	Shim, Spacer	2
R-990KIT-372	Hex Cap Screw, 1/2" UNC Gr.8 X 1.50"	4
	Hex Cap Screw, 1/2" UNC Gr.8 X 2.00"	4
	Hex Cap Screw, 1/2" UNC Gr.8 X 1.75"	4
	Flat Washer, SAE, 1/2" Gr.8	24
	Nut, Nylock, 1/2" UNC Gr.8	12
	Hex Cap Screw, 5/8" UNC Gr.8 X 4.00"	2
	Flat Washer, SAE, 5/8" Gr.8	4
	Nut, Nylock, 5/8" UNC Gr.8	2

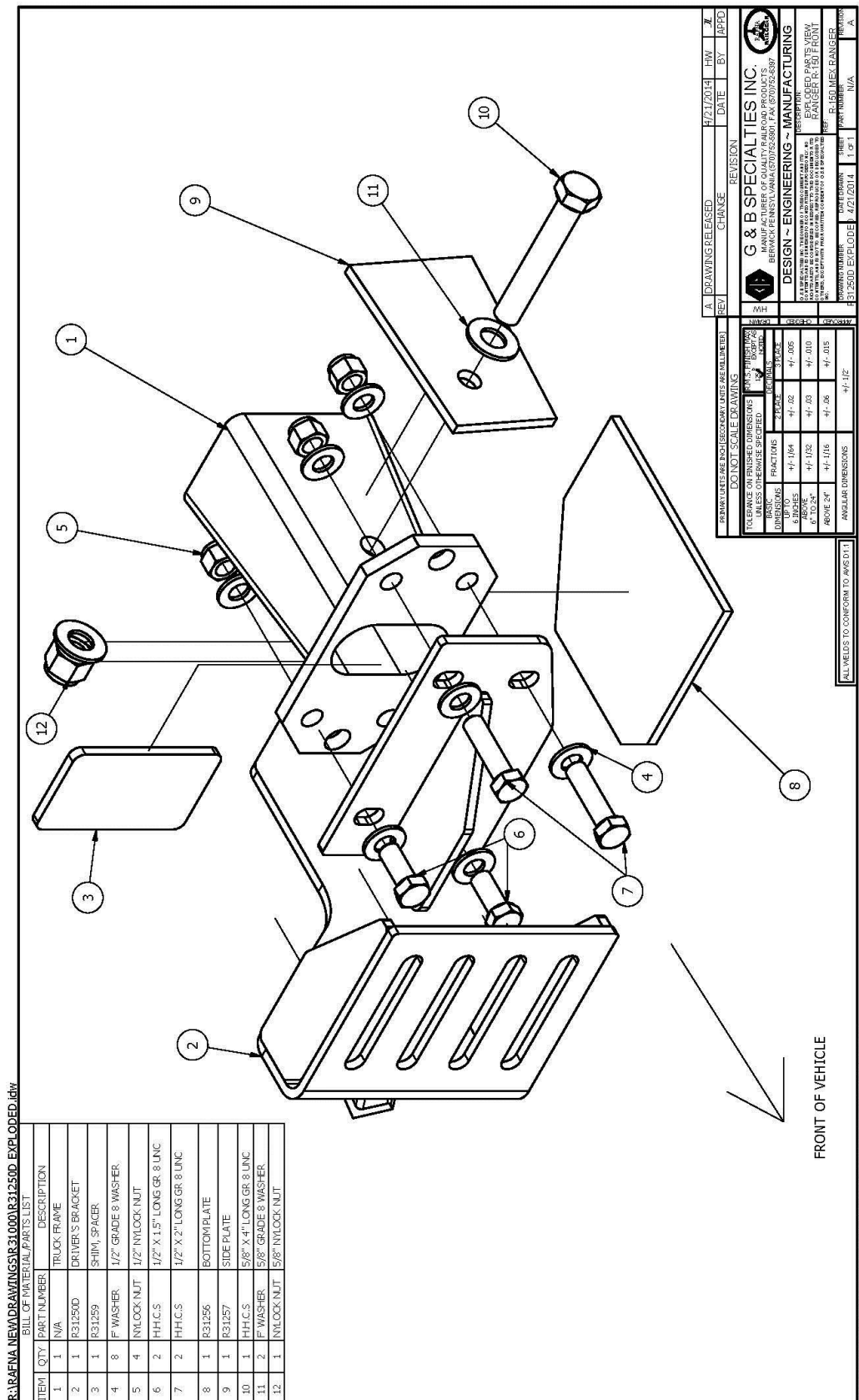
1. Remove the front bumper, front Ford grill, skid plate, and top shroud.
2. If it is desired to have the OEM front bumper reinstalled, it will have to be trimmed and modified to fit over the mounting brackets and railgear.
3. Align each of the mounting brackets with the front of the vehicle frame by placing them onto the frame and lining up the 4 front mounting holes.
4. For each of the brackets, install two 1/2" x 1.5" long bolts and two 1/2" x 2" long bolts, eight 1/2" washers and four 1/2" nuts as shown. The 2" bolts go in the outside holes. Hand tighten these fasteners.
5. Place R-31259 'Shim' in between mounting holes as shown, on each side. Tighten these fasteners to hold the shim in place, but do not torque. Reference Figure 1.
6. Place 5/8" x 4" long bolt through R-31257 and through truck frame, as shown. The head of the bolt should be facing the outside of the truck frame. Hand tighten this fastener. Reference Figure 1.
7. Align R-31256 on the bottom of the truck frame, and tack in place such that two sides of the plate are aligned with the bracket, and one side is aligned with R-31257. Once properly aligned, remove the 4" bolt and 1/4" fillet weld the side plate and bottom plate to the bracket. Re-install the bolt once welding is complete. Reference Figure 2 & Figure 3.
  - a. NOTE: Remove the battery terminals from the vehicle battery prior to welding.
  - b. NOTE: Also, 1/4" fillet weld the spacer into place.
8. Once welding is complete, the 5/8" x 4" long bolt can be torqued to 50 ft lbs dry and the 1/2" fasteners can be torqued to 50 ft-lbs dry. Do not over torque.
  - a. NOTE: Remove the battery terminals from the vehicle battery prior to welding.
9. Paint side plate and bottom plate as well as the fillet welds to prevent corrosion.



Following the Railgear installation, the front bumper will have to be trimmed to fit around the railgear brackets and railgear. Do not re-install front bumper until all wiring and routing of hydraulic lines are complete.

10. Re-install front bumper. Trim to fit.

11. Re-install top shroud.





MIO-M15RXFR31250 Rev C



ALL WELDS TO CONFORM TO AWS D1.1

R:\RAFNA NEW\DRAWINGS\R31000\R31250D MANUAL PRESENTATION.iam





**Figure #1**  
(DRIVERS SIDE SHOWN-PASSENGERS SIDE TYPICAL)



**Figure #2**  
(DRIVERS SIDE SHOWN-PASSENGERS SIDE TYPICAL)



**Figure #3**  
**(DRIVERS SIDE SHOWN-PASSENGERS SIDE TYPICAL)**