

INSTALLATION OF R-180 REAR MOUNTING KIT KUBOTA RTV-900

INSTALLATION SAFETY PRECAUTIONS

If any installation problems are encountered, please call G&B Specialties, Inc. for technical assistance before continuing with the installation process.



- Failure to heed to any of the following warnings could result in severe bodily injury and/or equipment damage.
- Read and understand this manual completely before attempting installation of the equipment.
- Installation instructions provided below only address the Rafna Industries railgear equipment. Applicable railway company procedures and policies must be adhered to.
- Before performing any work under the vehicle or railgear, ensure the engine is turned off and the parking brake is set.
- Beware of all pinch points on the railgear and keep all parts of the body clear.
- Ensure all removed components are given to the vehicle owner after the installation of the railgear. These components must be re-installed if the railgear is removed from the vehicle.
- Railway Company rules governing rail travel must always be observed .
- Never operate the vehicle if the Gross Vehicle Weight Rating (GVWR), Gross Axle Weight Rating (GAWR), or the wheel or tire load ratings are exceeded.

INSTALLATION OF REAR MOUNTING KIT

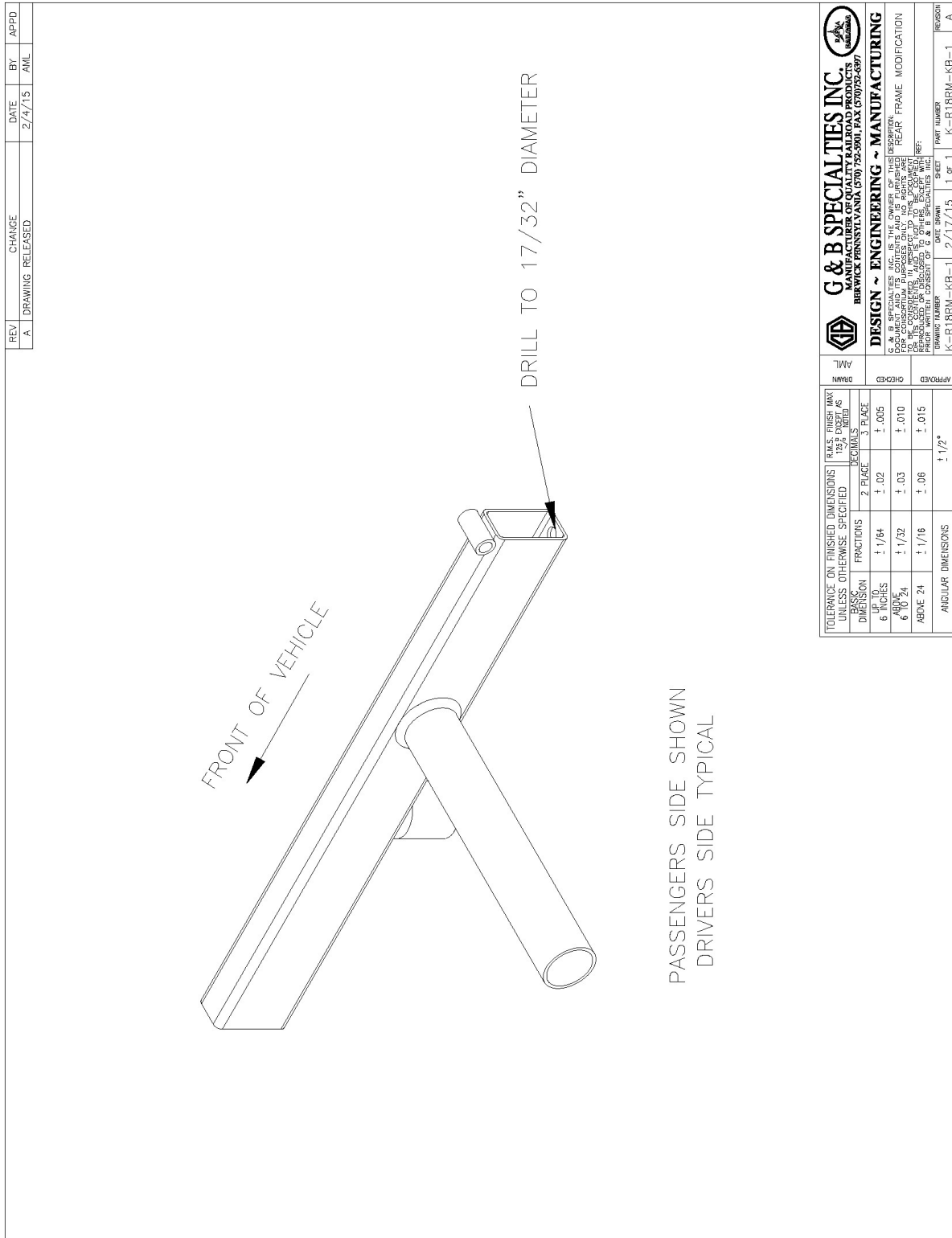
Table 1: Rear Mounting Kit Installation Parts

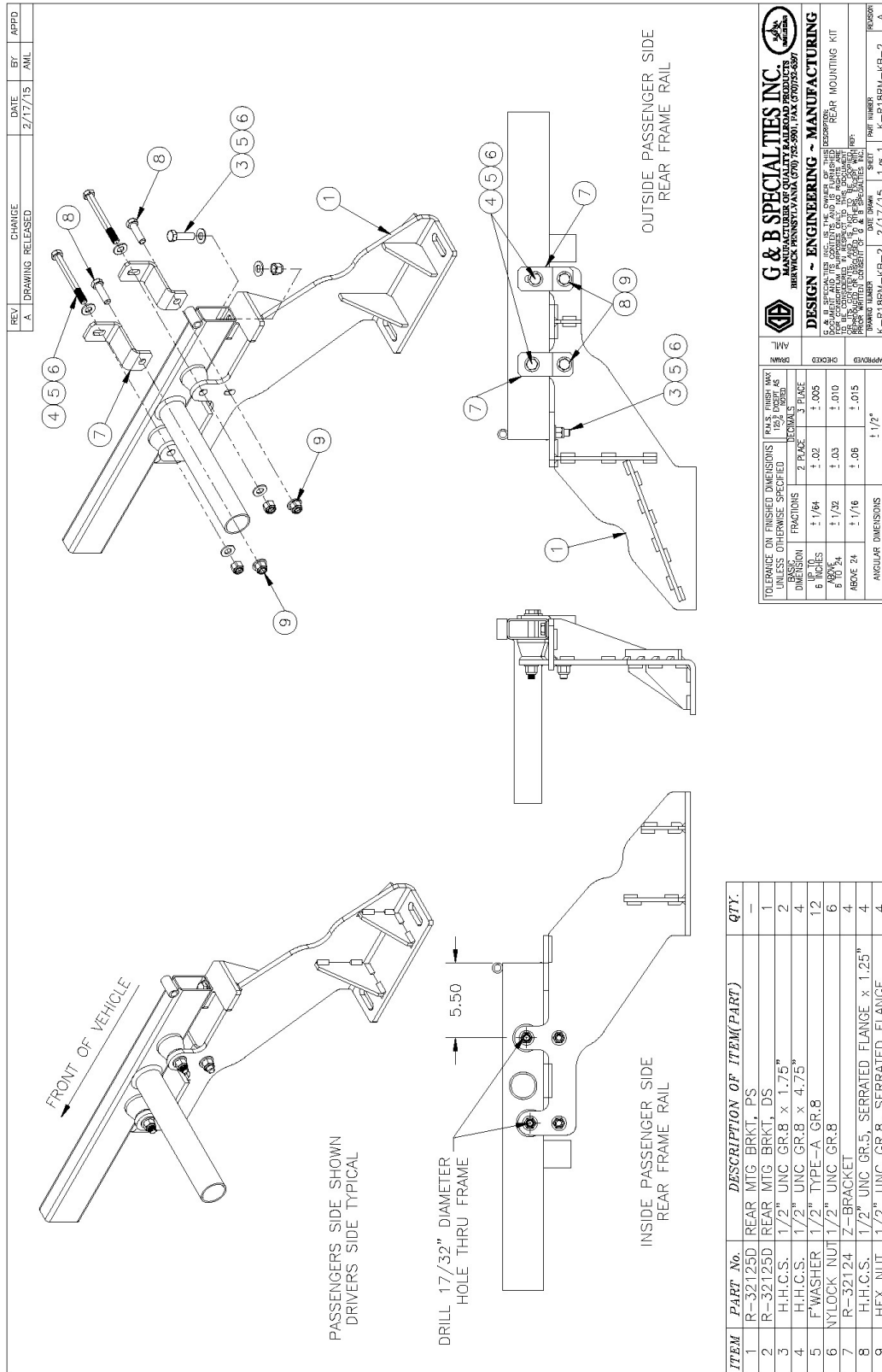
Part Number	Description	Qty
R-32125D	Rear Mounting Bracket, DS	1
R-32125P	Rear Mounting Bracket, PS	1
R-32120	Z-Bracket	2
R-20042	Railgear Mounting Shim - 1/2" Thick	4
R-20041	Railgear Mounting Shim - 1/4" Thick	2
R-20040	Railgear Mounting Shim - 3/4" Thick	2
R-990KIT-285 (Railgear Mounting)	5/8" UNC Gr.8 Bolt X 3.50"	4
	5/8" UNC Gr.8 Bolt X 4.50"	4
	5/8" UNC Gr.8 Bolt X 5.50"	4
	5/8" Type- A Flat Washer Gr.8	8
	5/8" UNC GR.8 Nylock Nut	4
R-990KIT-404	1/2" UNC Gr.8 Bolt X 1.75"	2
	1/2" UNC Gr.8 Bolt X 4.75"	4
	1/2" Type- A Flat Washer Gr.8	12
	1/2" UNC Gr.8 Nylock Nut	6
	1/2" UNC Gr.5 Serrated Flange Bolt x 1.25"	4
	1/2" UNC Gr.8 Serrated Flange Nut	4

1. The rear tow hitch will not be accessible once the railgear unit is installed
2. If equipped, remove rear hydraulic dump bed and rear fender/splash guards.
3. Remove any other equipment that may interfere with the installation of the mounting brackets.
4. There should be a small hole in the lower face of the rear frame rail near the end of the frame, just behind the spring hanger. This hole needs to be drilled to 17/32" diameter.
5. Place the rear mtg bracket flush with the bottom and inside of the frame rail as shown. Clamp in place.
6. Attach to frame using the hole drilled in step 4.
7. Using the two rear holes in the mounting bracket, mark and drill a 17/32" diameter hole thru the inner and outer frame rail.
8. Attach to frame using the supplied 1/2" hardware and z-brackets.
9. Torque 1/2" hardware to 75 ft-lbs dry.
10. Repeat steps 4 thru 9 for remaining bracket.

Following the installation of the rear railgear, the hydraulic dump bed and fender/splash guards can be re-installed.

The hydraulic dump bed cannot be tilted to the same OEM maximum angle due to interference with the drop gate and railgear cylinder. Please refer to the rear railgear installation/operation for further information.





OPERATION AND SERVICE OF R-180 REAR MOUNTING KIT KUBOTA RTV-900

OPERATION AND SERVICE SAFETY PRECAUTIONS

If any operating, services or parts problems are encountered, please call G&B Specialties, Inc. for technical assistance.



- Failure to heed to any of the following warnings could result in severe bodily injury and/or equipment damage.
- Read and understand this manual completely before attempting operation of the railgear equipped vehicle.
- Operating instructions provided below only address the Rafna Industries railgear equipment. Applicable railway company procedures and policies must be adhered to.
- Railway company rules governing rail travel must be observed at all times.
- Before performing any work under the vehicle or railgear, ensure the engine is turned off and the parking brake is set.
- Never operate the vehicle if the Gross Vehicle Weight Rating (GVWR), Gross Axle Weight Rating Rear or Rear (GAWR), or the wheel or tire load ratings are exceeded.

OPERATION AND SERVICE OF REAR MOUNTING KIT

With the Rear mounting kit installed on this vehicle, it may be operated as normal.

Never operate the vehicle if the Gross Vehicle Weight Rating (GVWR), Gross Axle Weight Rating Rear or Rear (GAWR), or the wheel or tire load ratings are exceeded.

The rear mounting kit must be serviced regularly to avoid damage to the equipment.

Service Required	6 Months
Inspect rear mounting kit fasteners (re-torque if required)	✓