

INSTALLATION OF R-180 REAR MOUNTING KIT KUBOTA RTV-X

INSTALLATION SAFETY PRECAUTIONS

If any installation problems are encountered, please call G&B Specialties, Inc. for technical assistance before continuing with the installation process.



- Failure to heed to any of the following warnings could result in severe bodily injury and/or equipment damage.
- Read and understand this manual completely before attempting installation of the equipment.
- Installation instructions provided below only address the RAFNA Industries railgear equipment. Applicable railway company procedures and policies must be adhered to.
- Before performing any work under the vehicle or railgear, ensure the engine is turned off and the parking brake is set.
- Beware of all pinch points on the railgear and keep all parts of the body clear.
- Ensure all removed components are given to the vehicle owner after the installation of the railgear. These components must be re-installed if the railgear is removed from the vehicle.
- Railway Company rules governing rail travel must always be observed.
- Never operate the vehicle if the Gross Vehicle Weight Rating (GVWR), Gross Axle Weight Rating (GAWR), or the wheel or tire load rating is exceeded.



INSTALLATION OF REAR MOUNTING KIT

Table 1: Rear Mounting Kit Installation Parts

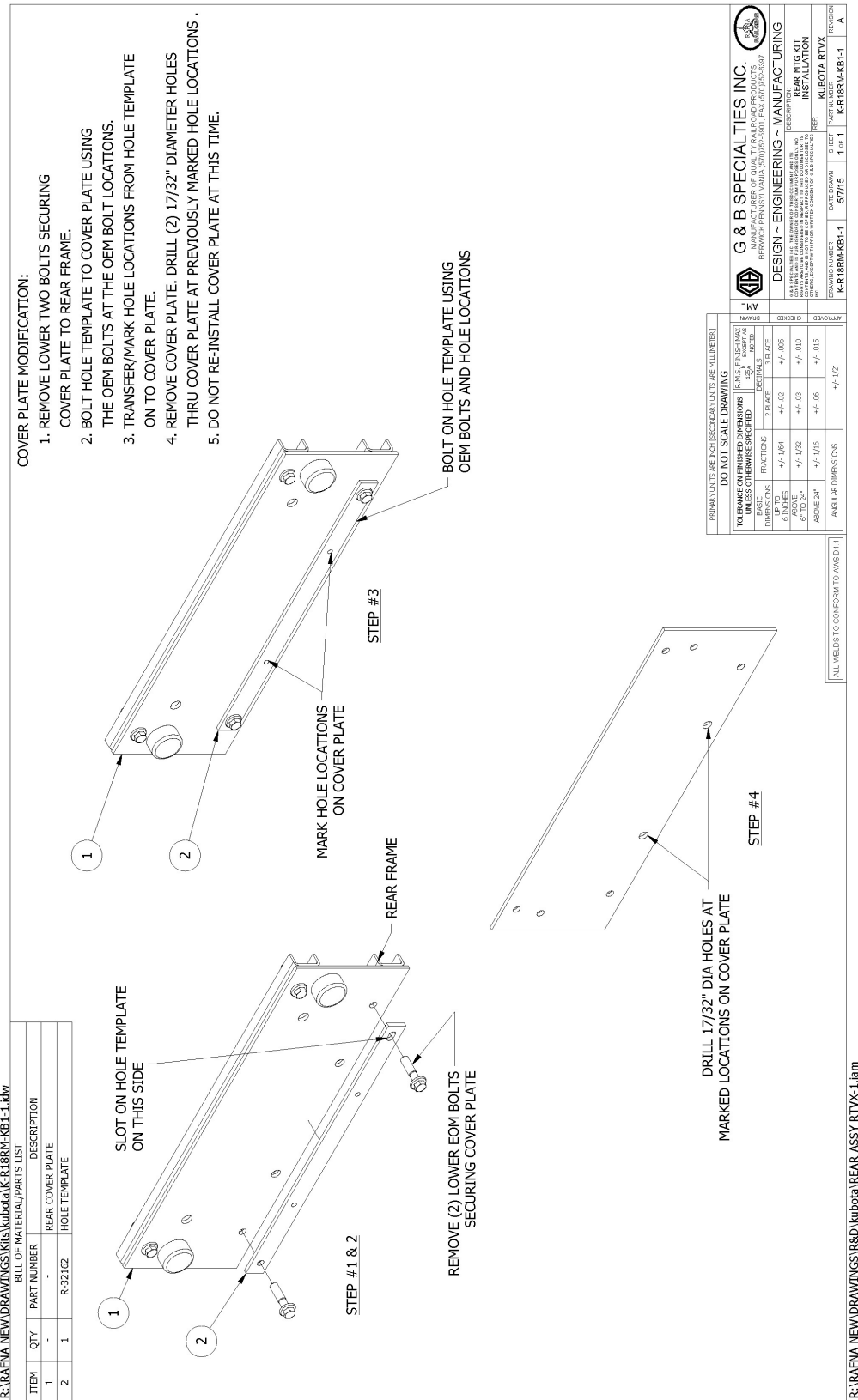
Part Number	Description	Qty
R-32161	Receiver Adapter	1
R-32160	Rear Mtg Bracket	1
R-32163D	Support Bracket, Drivers Side	1
R-32163P	Support Bracket, Passengers Side	1
R-32162	Hole Template	1
R-20042	Railgear Mounting Shim - 1/2" Thick	4
R-20041	Railgear Mounting Shim - 1/4" Thick	2
R-20040	Railgear Mounting Shim - 3/4" Thick	2
R-990KIT-285 (Railgear Mounting)	5/8" UNC Gr.8 Bolt X 2.50"	4
	5/8" UNC Gr.8 Bolt X 3.50"	4
	5/8" UNC Gr.8 Bolt X 4.50"	4
	5/8" UNC Gr.8 Bolt X 5.50"	4
	5/8" Type- A Flat Washer Gr.8	8
	5/8" UNC GR.8 Nylock Nut	4
R-990KIT-407	1/2" UNC Gr.8 Bolt X 1.75"	6
	1/2" UNC Gr.8 Bolt X 3.75"	1
	1/2" Type- A Flat Washer Gr.8	18
	1/2" UNC Gr.8 Nylock Nut	11
	1/2" UNC Gr.5 Serrated Flange Bolt x 1.25"	2
	1/2" UNC Gr.8 Serrated Flange Nut	2
	M8-1.25 x 25 Flange Bolt, GR.10.9	2

1. Remove any equipment that may interfere with the installation of the mounting bracket.
2. This kit utilizes the rear OEM receiver hitch for mounting of the rear mounting bracket
3. Follow installation instructions as outlined on the following pages.



04/29/22

BULLETIN MIO-R18RM-KB1 Rev C





04/29/22

BULLETIN MIO-R18RM-KB1 Rev C

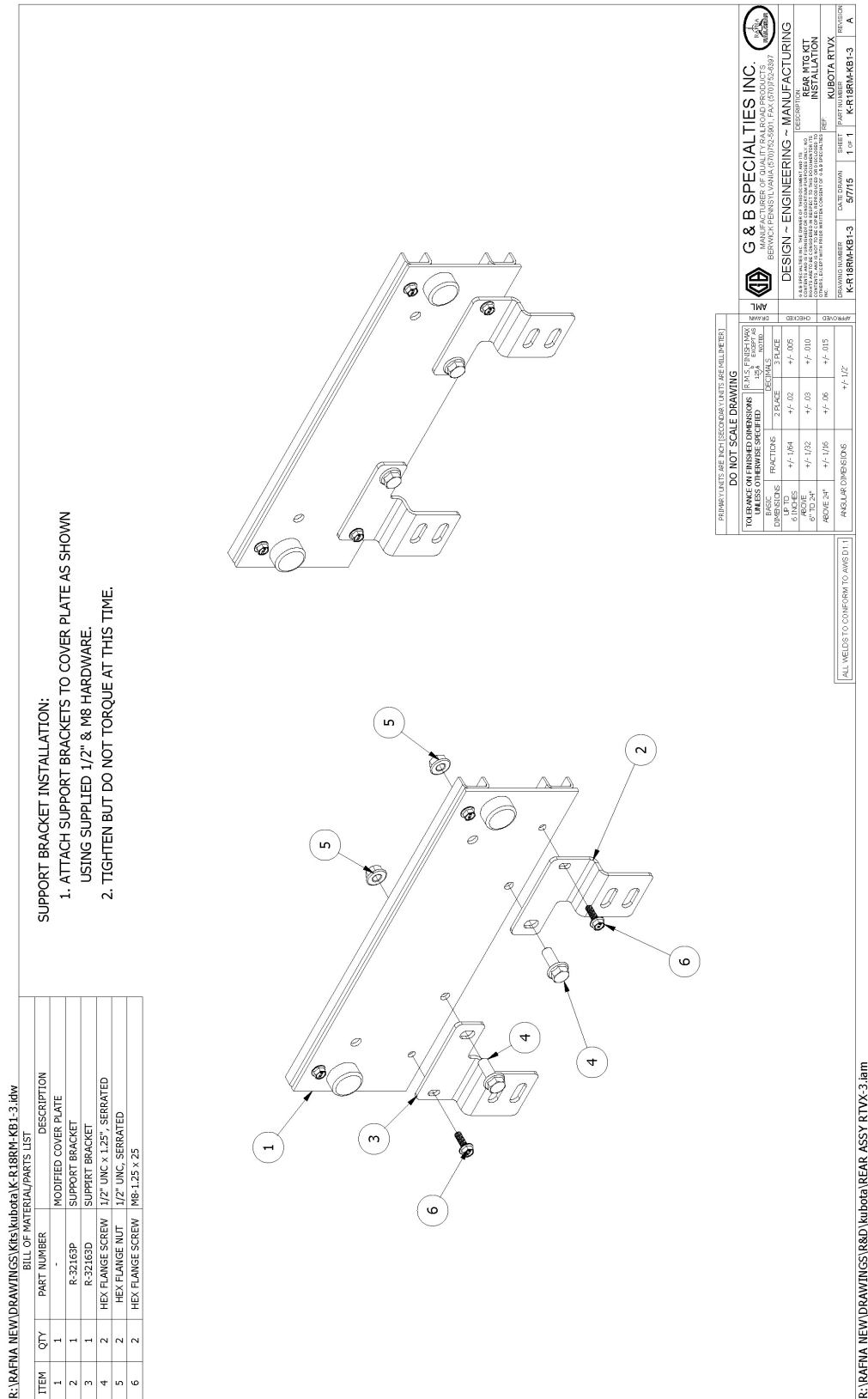
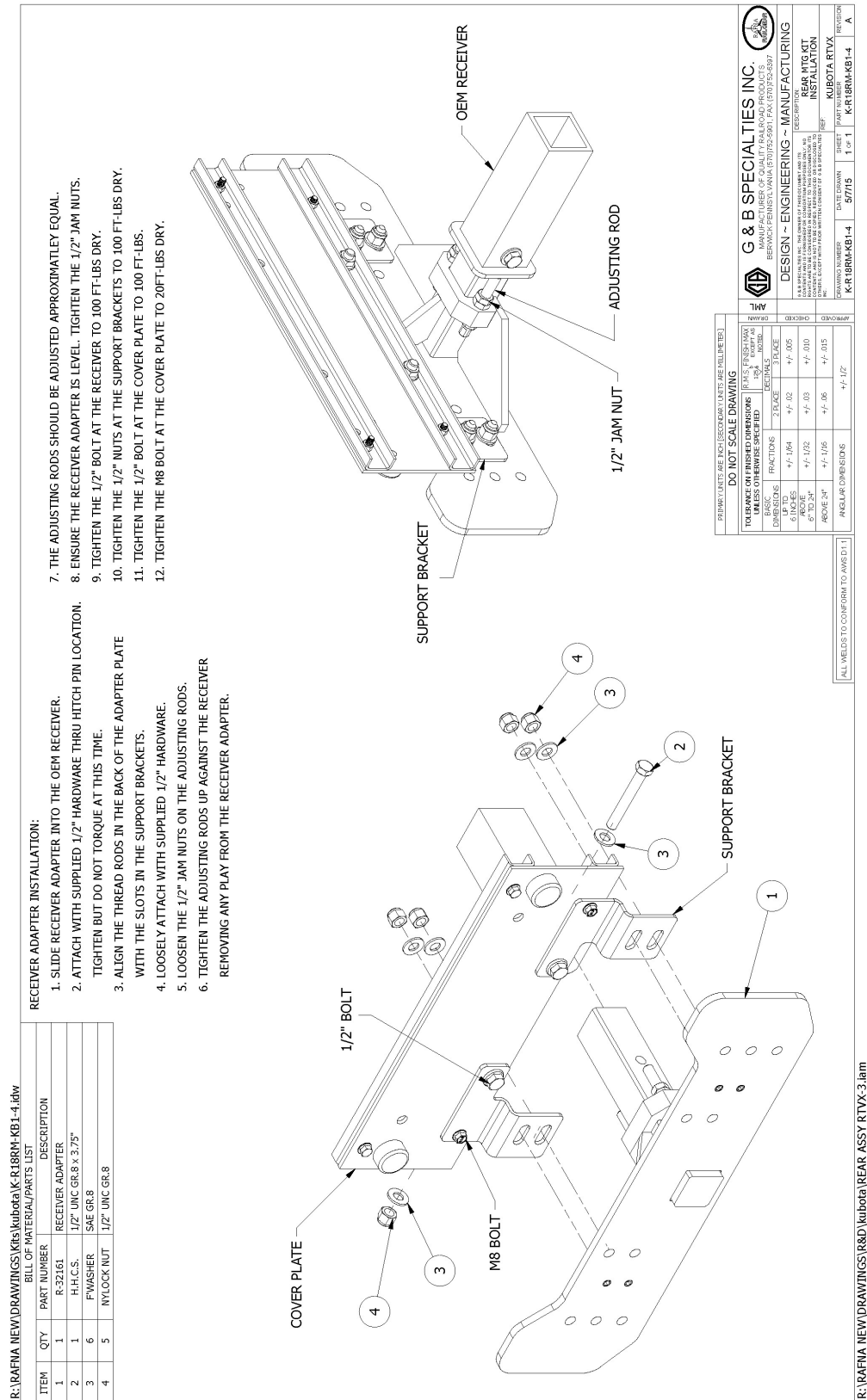


Figure 3: Support Bracket Installation



04/29/22

BULLETIN MIO-R18RM-KB1 Rev C





04/29/22

BULLETIN MIO-R18RM-KB1 Rev C

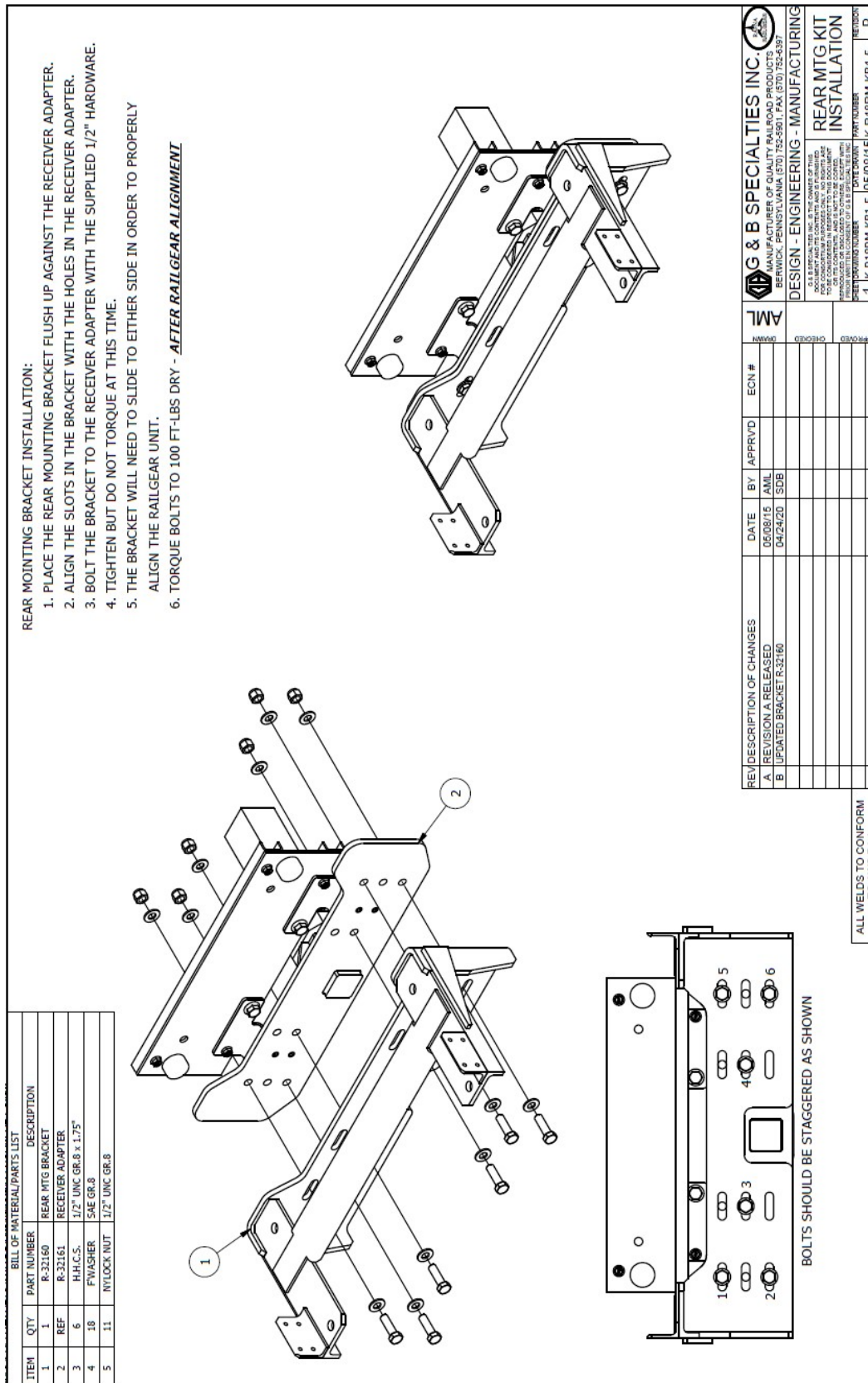


Figure 5: Rear Mounting Bracket Installation

OPERATION AND SERVICE OF R-180 REAR MOUNTING KIT KUBOTA RTV-X

OPERATION AND SERVICE SAFETY PRECAUTIONS

If any operating, services or parts problems are encountered, please call G&B Specialties, Inc. for technical assistance.



- Failure to heed to any of the following warnings could result in severe bodily injury and/or equipment damage.
- Read and understand this manual completely before attempting operation of the railgear equipped vehicle.
- Operating instructions provided below only address the RAFNA Industries railgear equipment. Applicable railway company procedures and policies must be adhered to.
- Railway company rules governing rail travel must be observed at all times.
- Before performing any work under the vehicle or railgear, ensure the engine is turned off and the parking brake is set.
- Never operate the vehicle if the Gross Vehicle Weight Rating (GVWR), Gross Axle Weight Rating Rear or Rear (GAWR), or the wheel or tire load ratings are exceeded.



OPERATION AND SERVICE OF REAR MOUNTING KIT

With the Rear mounting kit installed on this vehicle, it may be operated as normal.

Never operate the vehicle if the Gross Vehicle Weight Rating (GVWR), Gross Axle Weight Rating Rear or Rear (GAWR), or the wheel or tire load ratings are exceeded.

The rear mounting kit must be serviced regularly to avoid damage to the equipment.

Table 2: Recommended Service Schedule

Service Required	6 Months
Inspect rear mounting kit fasteners (re-torque if required)	✓

Table 3: Standard Fastener Torque Values

Fastener Size	Fastener Torque Value (ft-lbs) Dry
5/8" UNC Gr. 8 Fasteners	150
1/2" UNC Gr. 8 Fasteners	100
3/8" UNC Gr. 8 Fasteners	40
1/4" UNC Gr. 8 Fasteners	12