

INSTALLATION OF STEERING WHEEL LOCK KUBOTA RTV-900

SAFETY PRECAUTIONS

If any installation problems are encountered, please call G&B Specialties, Inc. for technical assistance before continuing with the installation process.



- Failure to heed to any of the following warnings could result in severe bodily injury and/or equipment damage.
- Read and understand this manual completely before attempting installation of the equipment.
- Installation instructions provided below only address the Rafna railgear equipment. Applicable railway company procedures and policies must be adhered to.
- Ensure that the steering wheel lock does not interfere with any vehicle devices or controls

INSTALLATION OF STEERING WHEEL LOCK

Steering Wheel Lock Kit Components

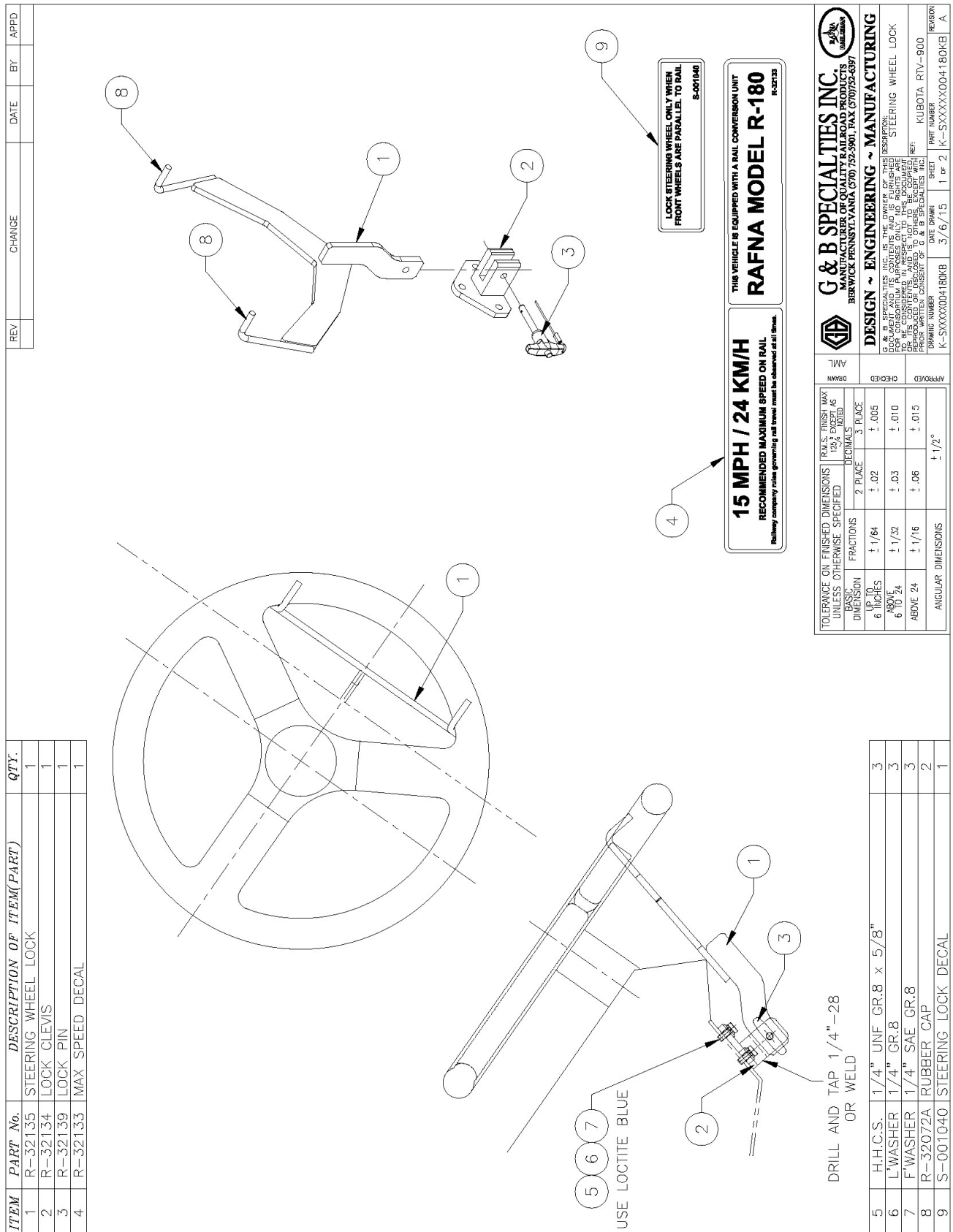
Part Number	Description	Qty
R-32135	Steering Wheel Lock	1
R-32134	Lock Clevis	1
R-32139	Lock Pin	1
R-32133	Speed Decal	1
S-001040	Steering Lock Decal	1
R-32072A	Rubber Cap	2
R-990KIT-406	Installation Hardware Kit	1

1. Visually check to ensure the front wheels are pointing straight ahead and the steering wheel is centered before installation.
2. Place rubber caps on ends of hooks.
3. Place the steering wheel lock up thru the steering wheel lock from the bottom.
4. The hooks on the steering wheel lock should wrap around the steering wheel and rest just inside the lower spokes of the steering wheel as shown.
5. Attach the steering lock to the lock clevis using the lock pin.
6. Rotate the steering wheel lock, clevis and pin backwards until the base of the lock clevis is resting level against the underside of the dashboard as shown.
7. Putting slight downward pressure on the steering wheel lock, mark the hole locations using the lock clevis as a template.
8. The lock clevis can be attached with the 1/4" hardware included with this kit. This will require drilling and tapping (3) 1/4"-28 UNF holes at the locations marked in step 6.
9. The lock clevis can also be welded in place using the hole locations marked in step 6.

All surfaces should be properly prepared for welding and then painted after welding for corrosion resistance.

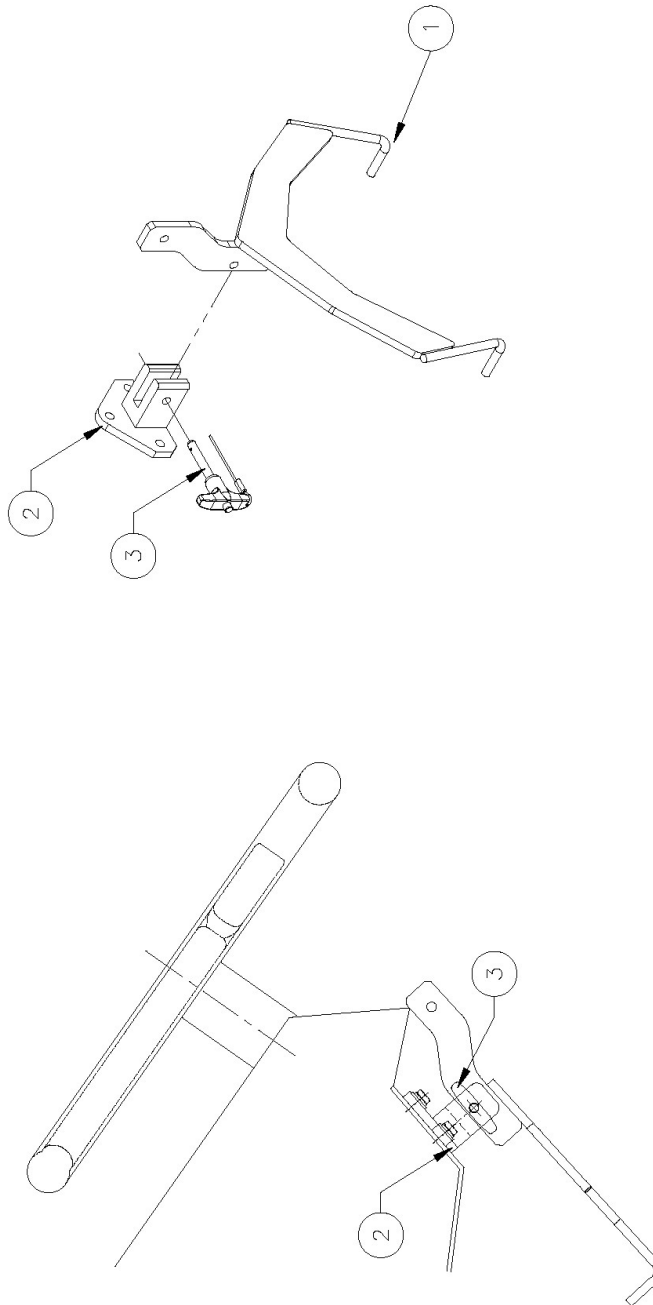
Proper welding procedures should always be followed and it is the responsibility of the installer to those procedures as outlined by the installation facility

10. Secure the Max Speed Decal to the dashboard within clear view of the operator.
11. Secure the Steering Lock Decal in a narear within clear view of the operator.



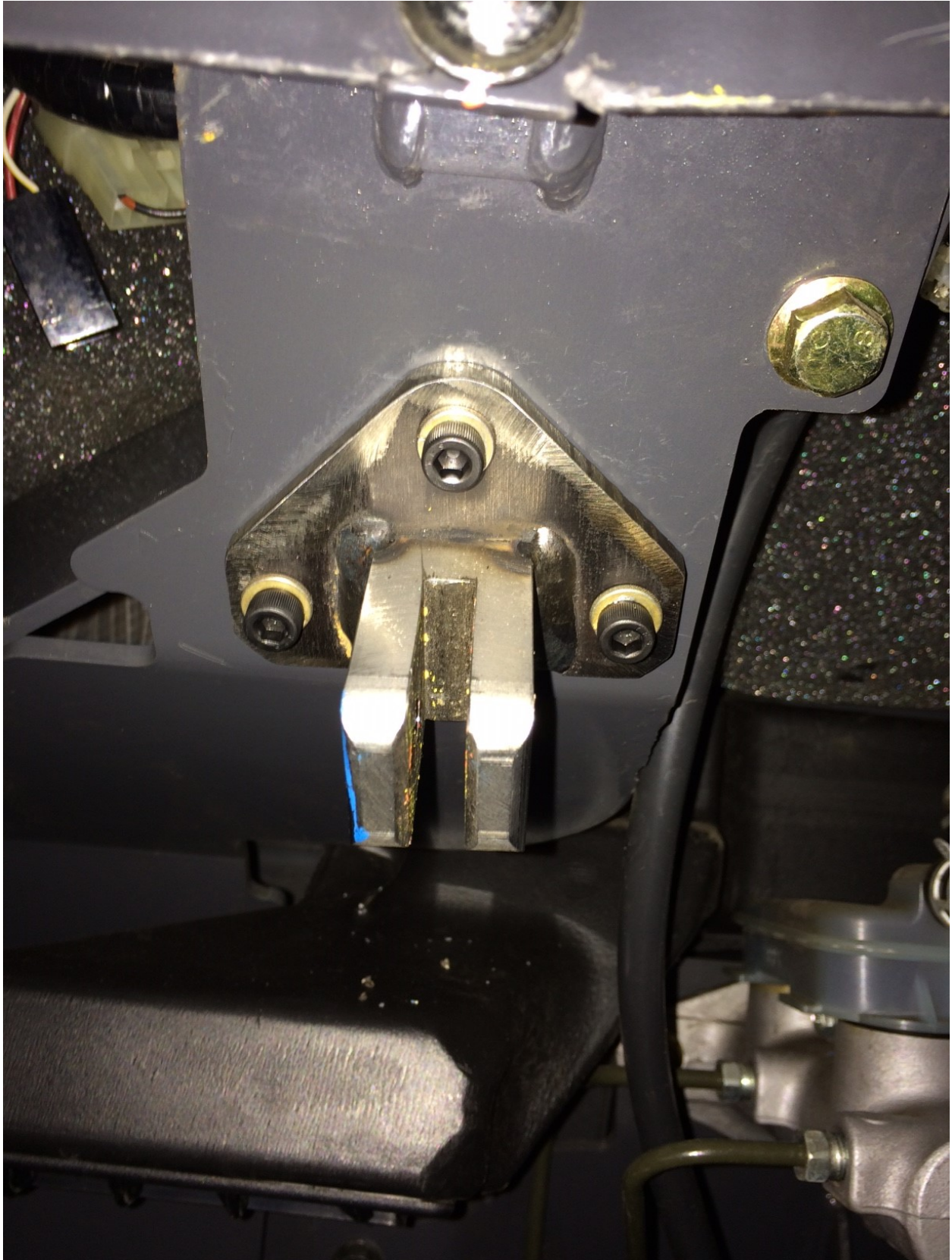
REV	CHANGE	DATE	BY	APPD

ITEM	PART No.	DESCRIPTION OF ITEM(PART)	QTY.
1	R-32135	STEERING WHEEL LOCK	1
2	R-32134	LOCK CLEVIS	1
3	R-32139	LOCK PIN	1

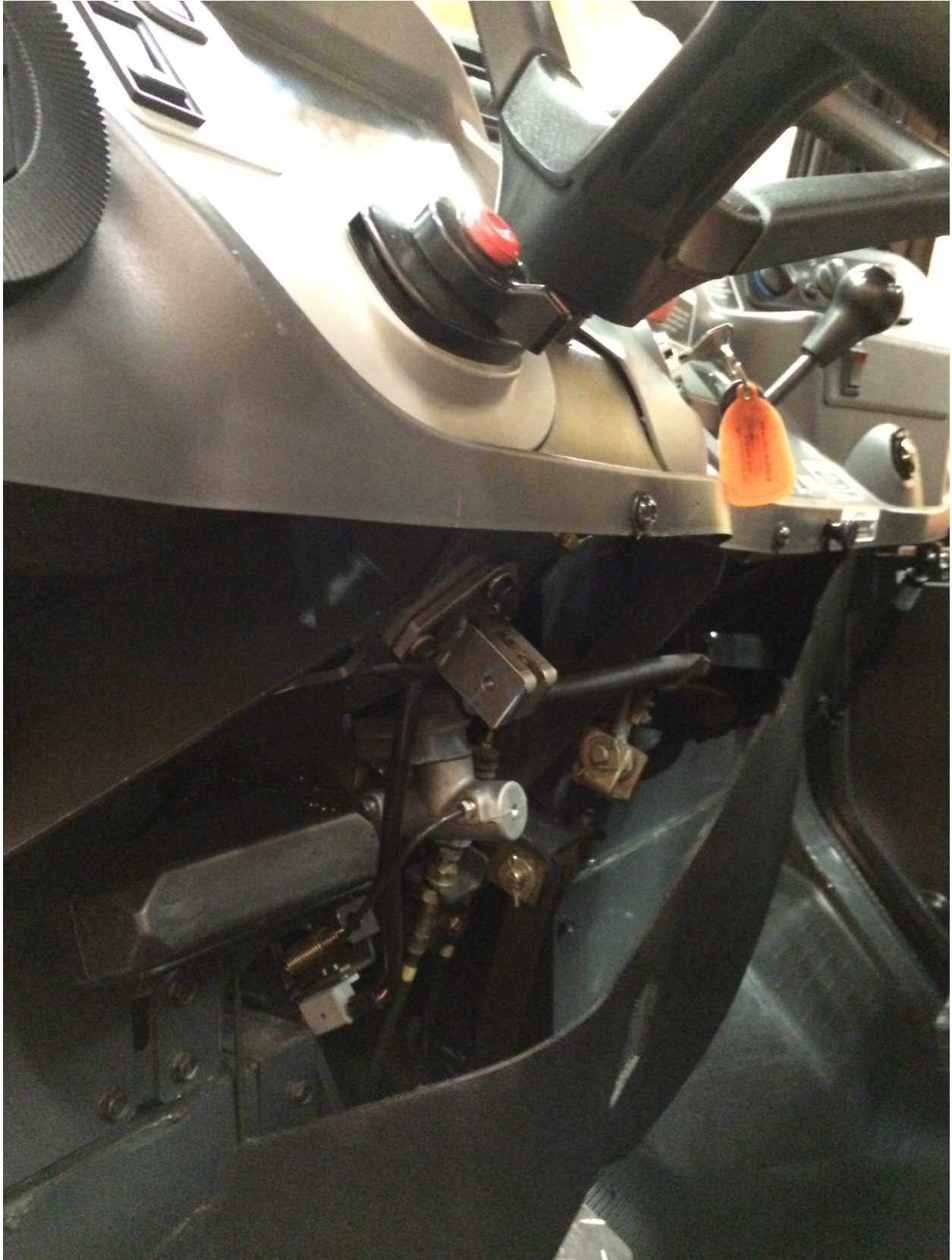


OPTIONAL STEERING LOCK STORAGE FOR NON RAIL TRAVEL

G & B SPECIALTIES INC. MANUFACTURER OF QUALITY RAILROAD PRODUCTS BERWICK PENNSYLVANIA (570) 752-5901, FAX (570) 752-6397		DESIGN ~ ENGINEERING ~ MANUFACTURING G & B SPECIALTIES INC. IS THE OWNER OF THIS DESIGN. NO PARTS OR EQUIPMENT SHALL BE USED FOR REPRODUCTION OR REUSE OF ANY PARTS OR EQUIPMENT WITHOUT THE WRITTEN CONSENT OF G & B SPECIALTIES INC.	
TOLERANCE ON FINISHED DIMENSIONS UNLESS OTHERWISE SPECIFIED BASIC DIMENSION 6 INCHES ABOVE 6 TO 24 ABOVE 24	FRACTIONS $\pm 1/64$ $\pm 1/32$ $\pm 1/16$	DECIMALS 2 PLACE $\pm .02$ $\pm .03$ $\pm .06$	3 PLACE $\pm .005$ $\pm .010$ $\pm .015$
ANGULAR DIMENSIONS $\pm 1/2^\circ$		APPROVED DATE DRAWN 3/6/15 SHEET 2 OF 2 PART NUMBER K-SXXX004180KB REVISION A	



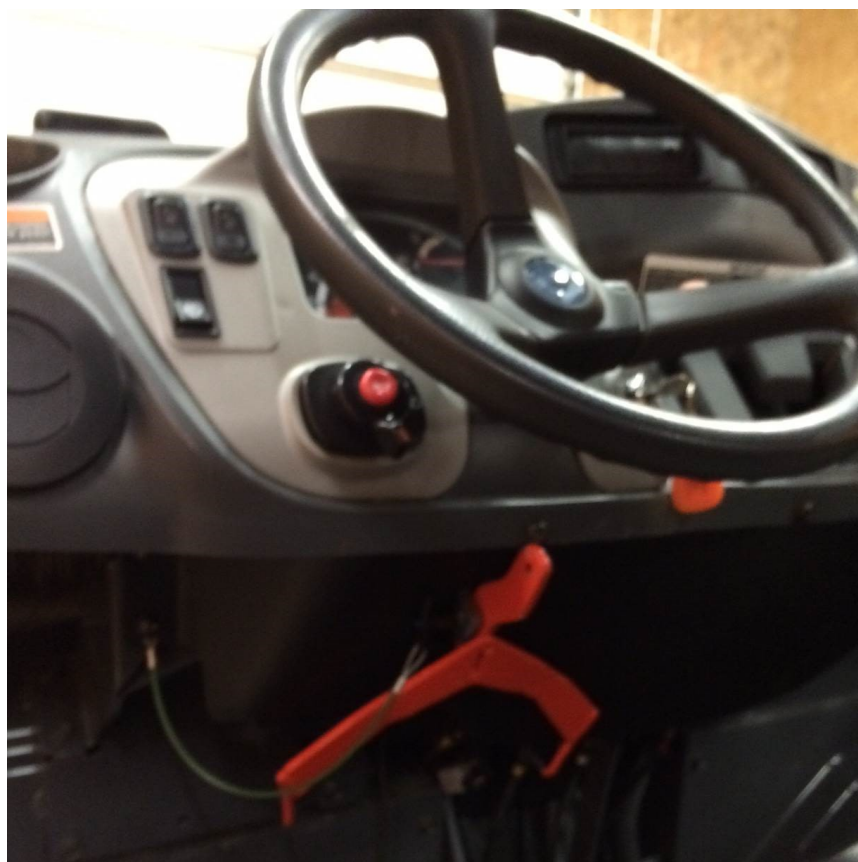












OPTIONAL STORAGE LOCATION

OPERATION AND SERVICE OF STEERING WHEEL LOCK

SAFETY PRECAUTIONS

If any operating, services or parts problems are encountered, please call G&B Specialties, Inc. for technical assistance.



- Failure to heed to any of the following warnings could result in severe bodily injury and/or equipment damage.
- Read and understand this manual completely before attempting operation of the railgear equipped vehicle.
- Operating instructions provided below only address the RAFNA railgear equipment. Applicable railway company procedures and policies must be adhered to.
- Railway Company rules governing rail travel must be observed at all times.
- At level rail crossings, ensure that no other vehicles are approaching and flag the crossing to ensure safety. This vehicle will not operate crossing signals. Use caution when approaching and traversing level crossings.
- The steering wheel lock must be engaged at all times while on rail.

OPERATION OF STEERING WHEEL LOCK

The following procedure details the steering wheel lock operation.

1. Placing The Vehicle On The Track:

- a) Engage the steering wheel lock after both the front and rear railgear are fully deployed and prior to rail travel.
- b) Turn the steering wheel until the front tires point straight ahead and the spokes of the steering wheel at the 12, 4, and 8 o'clock position.
- c) Place the steering wheel lock up thru the steering wheel from the bottom with the catches facing the operator
- d) The catches on the steering wheel lock should wrap around the steering wheel and rest just inside the lower spokes of the steering wheel as shown.
- e) Rotate the steering wheel lock backwards until the stem of the lock engages the lock clevis.
- f) Secure the steering wheel lock to the lock clevis with the lock pin by pressing the button on the top of the handle and inserting the lock pin all the way thru the lock clevis and stem of the steering wheel lock then releasing the button.
- g) Test the lock pin engagement by firmly pulling on the lock pin. **The lock pin should not disengage the lock clevis without the top button is pressed**

2. Traveling On Rail:

- a) The steering wheel lock must be engaged at all times while on rail.

3. Removing The Vehicle From The Track:

- a) Disengage the steering wheel lock after both the front and rear Railgear are fully retracted in the road position and prior to road travel.
- b) Remove the lock pin by pressing the button on the top of the handle and sliding the lock pin out.
- c) Remove the steering wheel lock from the steering wheel.
- d) The lock pin can be reinserted into the lock clevis for storage.
- e) The steering wheel lock will need to be securely stored in the vehicle.

SERVICE OF STEERING WHEEL LOCK

The steering wheel lock should be checked for loose, damaged or worn parts. This check should be done daily or prior to each use.

The lock clevis should be checked for damaged or worn parts, loose fasteners and/or bad or broken welds. This check should be done daily or prior to each use.

The lock pin should be checked for wear and that the lock engages and releases properly. This check should be done daily or prior to each use.

If any part of the steering wheel lock is damaged or not functioning properly;
DO NOT USE