

RAFNA R-150 Cushion-Ride Railgear

Description:

G & B Specialties Model R-150 is applicable to vehicles up to 7,000 lbs GVWR. Both rotating and vertical front railgear are available. Railgear locks automatically in both road and rail position. Proven "Cushion-Ride" suspension provides superior ride quality, reduced vibration through the vehicle frame, less component stress, and constant rail wheel to rail contact. No railgear adjustments are required for varying loads. Rail wheel assemblies are bolted to the axles for simple wheel alignment. All four rail wheels provide full track circuit isolation. Included 12VDC electric / hydraulic pump and reservoir with sealed push button controls provides safe and easy access to the rail. Optional in-cab railgear controls are available. Few moving parts result in low maintenance and lubrication costs. Fully installed weight is approximately 300 lbs front and 300 lbs rear. Uses light weight 8" diameter cast steel wheels with heavy duty tapered roller bearings. Rotating rear railgear is standard.

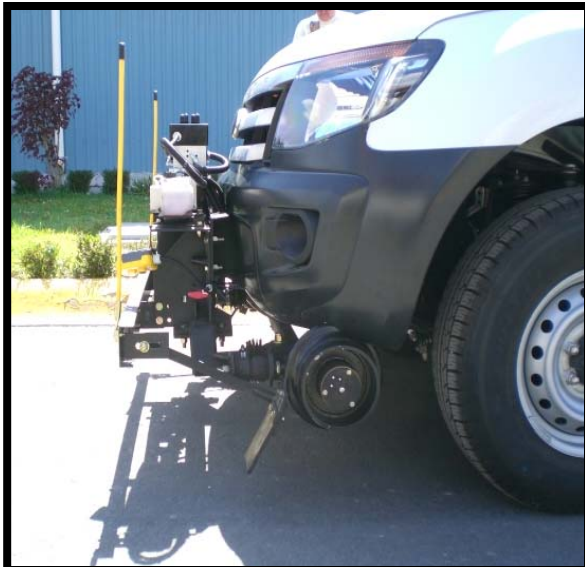


Standard Features:

- Cushion-Ride Rubber Suspension
- Automatic Locking System
- Heavy Duty Double Acting Hydraulic Cylinders
- Hydraulic Operating Valves on Front and Rear Units.
- 12VDC Hydraulic Pump and Reservoir
- Built-In Derail Skids
- Rail Sweeps Front and Rear
- Standard Railgear Controls
- Full Track Circuit Insulation (All Four Wheels)
- Protective Bellows Over All Inner Guide Tubes
- Mechanical Steering Wheel Lock
- Corrosion Resistant; Long Life Fasteners
- Grease Fittings at All Wear Points
- Rotating Rear Railgear is Standard

Optional Features:

- In-Cab and Full In-Cab Railgear Controls
- Rotating Front and Vertical Front Railgear Available



RAFNA R-150 Cushion-Ride Railgear

Vehicle Classification:

- GVWR—6,500 lbs MAX
- GAWR (Front) - 3,100 lbs
- GAWR (Rear) - 3,400 lbs

Wheels:

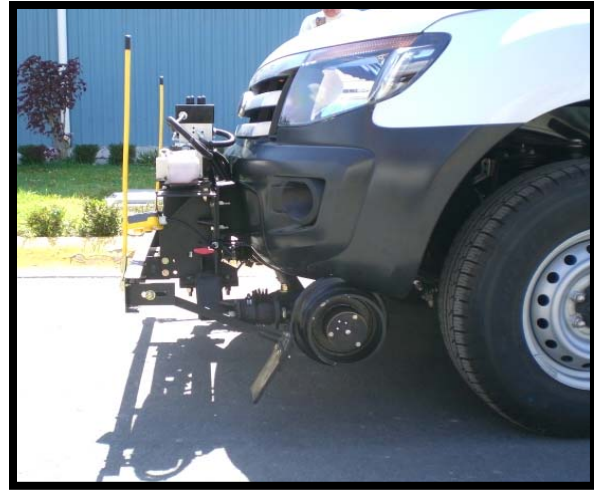
- Material—Cast Steel
- Tread—8" Diameter
- Flange—10-1/4" Diameter
- Bearings— HD Tapered Roller
- Grease Cap w/ Vent

Vehicle Applications

- 14-15 Ford Ranger (Mexico)
- 00-05 Dodge Dakota
- 00-11 Dodge Durango

Installed Weights:

- Total—600 lbs
- Front—300 lbs
- Rear—300 lbs



Wabtec Components LLC
G&B Specialties
P.O. Box 305
535 West Third Street
Berwick, PA 18603
570-752-5901
www.rafna.com
www.wabteccorp.com

 **Wabtec Components LLC**
G&B Specialties, Inc.

Rev C 03/28/2022