

TECHNICAL SERVICE BULLETIN RAFNA RAILGEAR	
ISSUE DATE: June 17, 2013	TSB NUMBER: TSB-190
HAZARD / URGENCY RATING	
X	DANGER - Physical harm is possible if TSB is not observed or followed
X	WARNING - Equipment damage is possible if TSB is not observed or followed
X	CAUTION - Essential issue affecting operation, service, parts or installation
X	INFORMATIONAL - Advisory which may be of interest

APPLICABLE EQUIPMENT:

R290 Railgear

SUMMARY:

Wear at the Inner Guide Tube Axle Guide Tube Pin area on the Axle has been found at various degrees of wear depending upon age of unit and amount of Maintenance performed on Railgear.

IMPACT:

Excessive wear in this area can lead to an axle failure.

ACTION:

Inspect this area as follows to determine the amount of wear acceptable before axle change is required:

Primary method of Inspection

Inspect vehicle as close to actual use by means of, rail, alignment rack, two by fours or steel tubing. Deploy railgear and observe or measure axle movement at the Axle Guide Pin Location.

You can have 1/8" of wear in both the up and down direction from center line of the Axle Guide Pin. This would be a total of 1/8" up from center and 1/8" down from center, for a total of 1/4" wear. If the 1/4" wear is all up from center or all down from center, then this would not be acceptable. If axle is out of specifications replace with Axle R-2930. Pin should show no wear. If pin shows wear replace with P/N, R990KIT-353.

Alternate method for inspection

Lower Railgear until it is resting on the ground without any load being applied to it. Remove 5/32" cotter pin and slide bellows out of the way, then remove Guide Tube Pin. Now inspect axle and pin for wear. Replace pin and cotter pin and proceed to other end of axle and repeat inspection process. Inspection process for pin wear and axle wear is as follows:

If pin shows wear replace with P/N, R990KIT-353.
Use Alternate Method of Inspection drawing which shows limits of wear for slots and holes.
Use appropriate measuring tools to perform the required measurement. Measuring tools will vary from location to location. If Axle is out of specifications replace with Axle R-2930.

If Axle is out of specification replace with Axle R-2930.
If Guide Tube Pin, P/N R-2949 has any wear replace with R290 Axle Repair Kit, P/N R990KIT-353

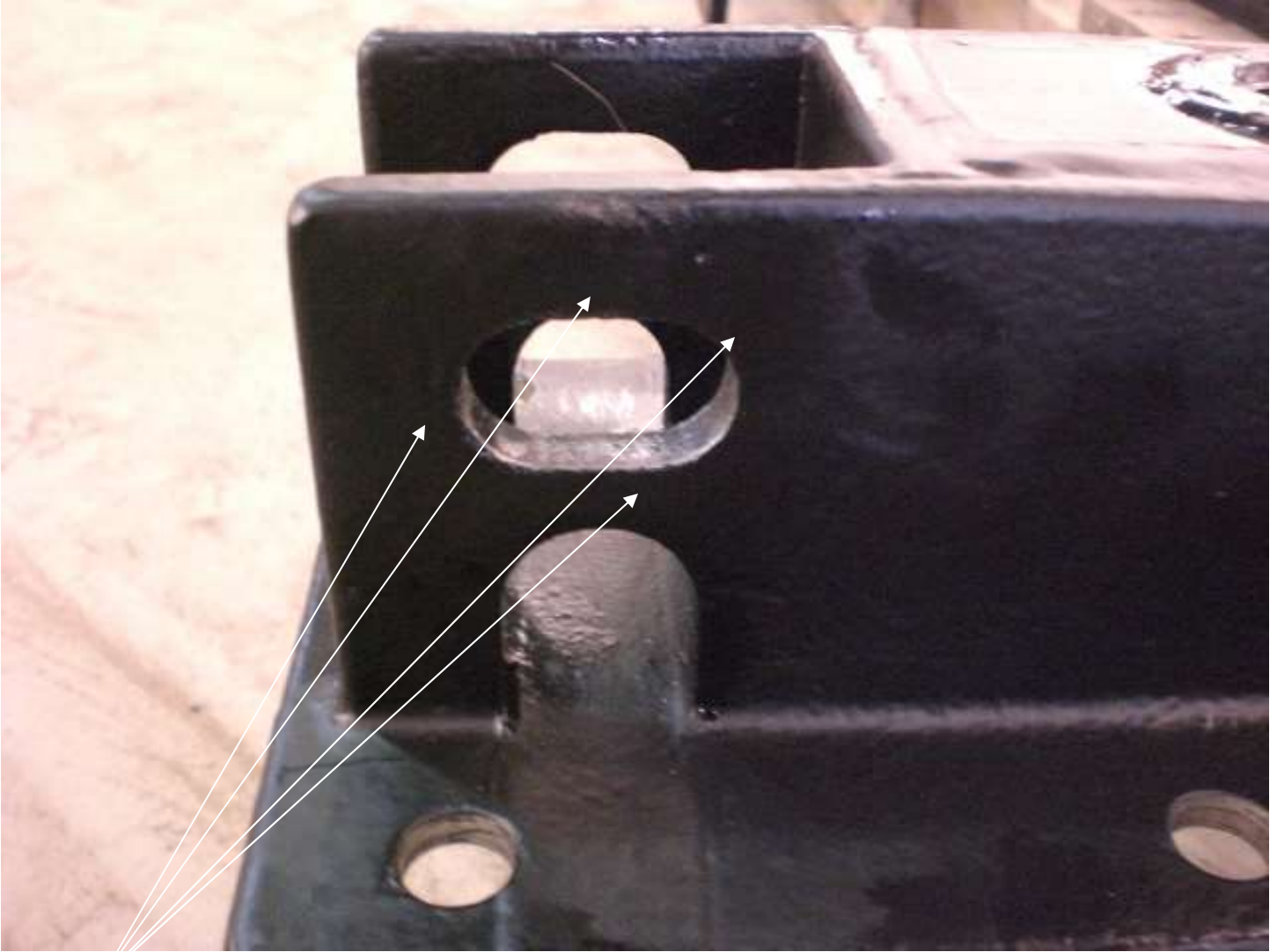
Attached to this TSB is a revised copy of G&B Specialties FRA Inspection for R290 Railgear. This revised FRA Inspection form is issued to insure that the (Rafna) G&B Specialties R290 Railgear is inspected and serviced correctly. Items of concern which can create premature wear and failure to the axle in the area of the guide pin, but not limited to, are as follows:

- **Improper over center adjustment of the Railgear, over center must be 2°~3° Max.**
- **Hi-Rail wheel loads should be set at 450/550lbs. Min/750lbs. Max.**
- **Wheel wear must be checked using P/N S-001200; wear on wheel must fall within specifications called out on Wear Gauge.**
- **The GVWR of the vehicle must be maintained to insure that the R290 is not overloaded.**

G&B Specialties contact number for replacement parts:
Phone 570-752-5901 Ext 135

G&B Specialties contact number for Technical assistance:
USA Phone Number, 570-752-5901 Ext 127
Cell Number 570-441-6988

G&B Specialties contact number for Technical assistance:
Canada Phone Number 570-854-0482



WEAR AREA

Alternate Method of Inspection

