

INSTALLATION OF R-290 FRONT MOUNTING KIT 2014 - 2018 RAM 2500/3500 4x4/4x2

INSTALLATION SAFETY PRECAUTIONS

If any installation/operation problems are encountered, please call G&B Specialties, Inc. for technical assistance before continuing with the installation process.



- Failure to heed to any of the following warnings could result in severe bodily injury and/or equipment damage.
- Read and understand this manual completely before attempting installation of the equipment.
- Installation instructions provided below only address the RAFNA railgear equipment. Applicable railway company procedures and policies must be adhered to.
- Before performing any work under the vehicle or railgear, ensure the engine is turned off and the parking brake is set.
- Do not start the vehicle with the power steering hoses disconnected. Reconnect all hoses and secure the power steering cooler if the vehicle is started.
- Ensure all removed components are given to the vehicle owner after the installation of the railgear. These components must be re-installed if the railgear is removed from the vehicle.
- Always disconnect the vehicle's battery when welding on the vehicle or railgear to protect the vehicle's electrical system.
- Railway Company rules governing rail travel must be observed at all times.
- Never operate the vehicle if the Gross Vehicle Weight Rating (GVWR), Gross Axle Weight Rating Front or Rear (GAWR), or the wheel or tire load ratings are exceeded.

INSTALLATION OF FRONT MOUNTING KIT

The following procedure details the installation of the front mounting kit. The hardware required for this installation is listed in Table 1.

Table 1: Front Mounting Kit Installation Parts

Part Number	Description	Qty
R-31270D	Mounting Bracket, Drivers Side	1
R-31270P	Mounting Bracket, Passengers Side	1
R-31276D	Outer Support Plate, Drivers Side	1
R-31276P	Outer Support Plate, Passengers Side	1
R-18009	Spacer	4
R-32101	Bumper Mtg Plate	4
R-2960	Railgear Mtg Shim, 0.5"	2
R-2960A	Railgear Mtg Shim, 1"	2
R-2631	Railgear Mtg Shim, 2"	2
R-32848	Orange Sight Wands (Pair), 0.75" x 36"	1
R-990KIT-376	1/2" UNC Gr. 8 Bolt x 4" Long	10
	1/2" UNC Gr. 8 Bolt x 1.75" Long	8
	1/2" UNC Gr. 8 Bolt x 1.50" Long	8
	1/2" Gr. 8 Washer	40
	1/2" UNC Gr. 8 Nylon Insert Lock Nut	22
R-990KIT-304	3/4" UNC Gr. 8 Bolt x 3.50" Long	4
	3/4" UNC Gr. 8 Bolt x 4.50" Long	4
	3/4" UNC Gr. 8 Bolt x 5.50" Long	4
	3/4" UNC Gr. 8 Bolt x 6.50" Long	4
	3/4" Gr. 8 Washer	8
	3/4" UNC Gr. 8 Nylon Insert Lock Nut	4

Drivers Side Bracket Installation

1. Remove the front bumper and bumper mounting brackets attached to the vehicle frame. Retain the front bumper, brackets and hardware for re-installation. (if required)
2. Remove tow hooks. Tow hooks will not be re-installed
3. Place the driver's side mounting bracket against the bottom and inside of the frame and place the 1/2" supplied hardware through the brackets and frame at the existing bumper bracket mounting holes.
4. Place the driver's side outer support plate against the outside of the frame, making sure it wraps around the bottom of the frame and drivers side mounting bracket. Secure to frame with the hardware used in step #3. Making sure both brackets are tight against the inside outside and bottom of frame. Torque to 100 ft/lbs dry. Do not over torque.
5. Secure both brackets together at the overlap on the bottom of the frame with the supplied 1/2" hardware. Torque to 100 ft/lbs dry. Do not over torque.

6. Using the rear upper hole in the outer support plate as a guide, drill a 17/32" diameter hole thru the frame and mtg bracket. Secure to frame using the supplied 1/2" hardware. Torque to 50 ft/lbs dry. Do not over torque.
7. Place the bracket spacers between the mounting bracket and outer support plate and secure with the supplied 1/2" hardware. Torque to 100 ft/lbs dry. Do not over torque.
8. Repeat above steps for the passenger's side.

Note:

Make certain everything sits flush against the frame when tightening the fasteners.

9. If the vehicle's original front bumper is to be re-installed in its original position, it will need to be modified and reinforced as required by the installer. The recommended modifications are shown at the end of installation section of this manual.
10. Optional bumper mounting plates are supplied with this mounting kit and can be used at the installer's discretion. The mounting plates attach to the mounting bracket and outer support plate and are intended to reuse the OEM bumper mounting bracket and OEM hardware.

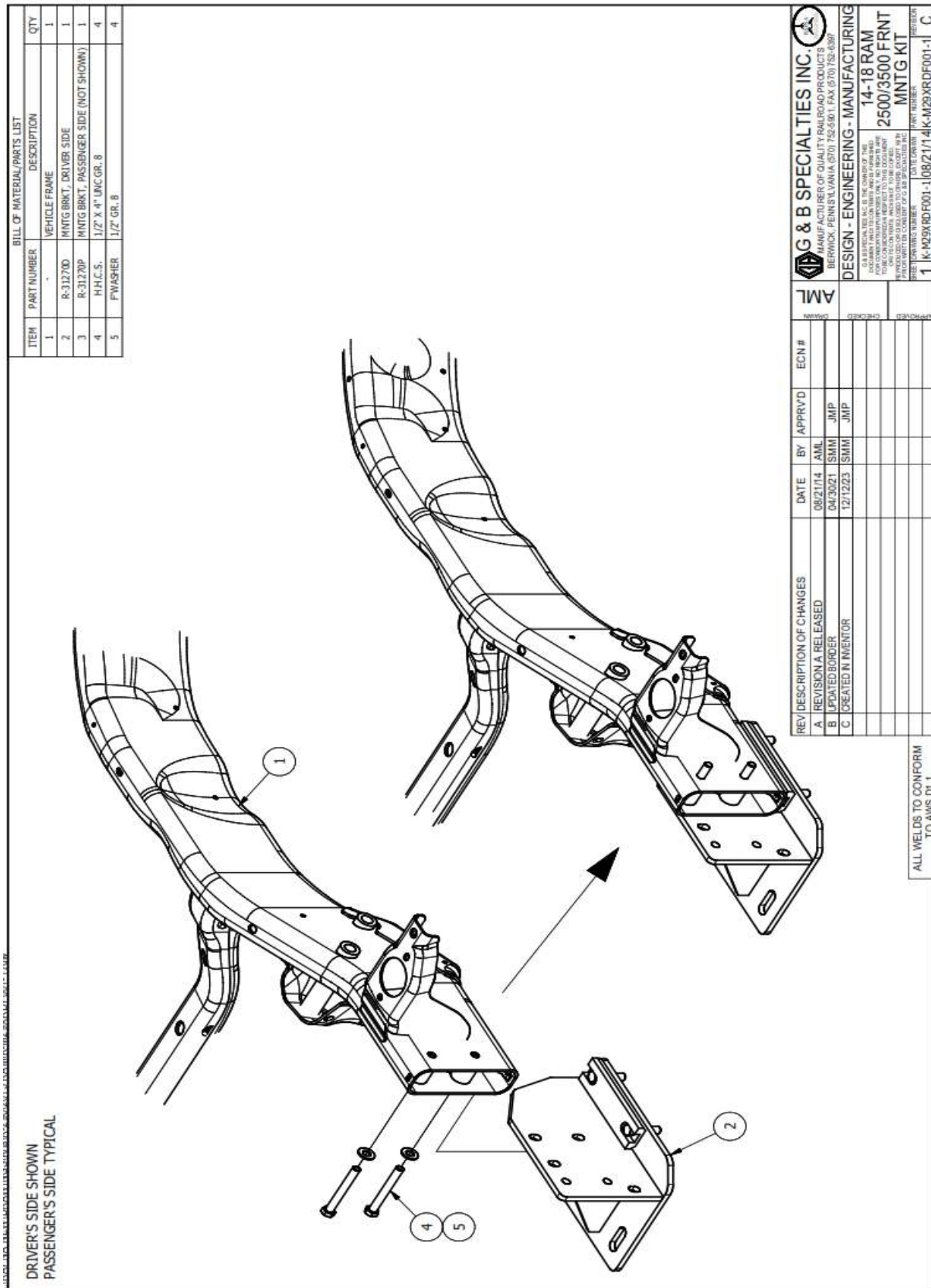
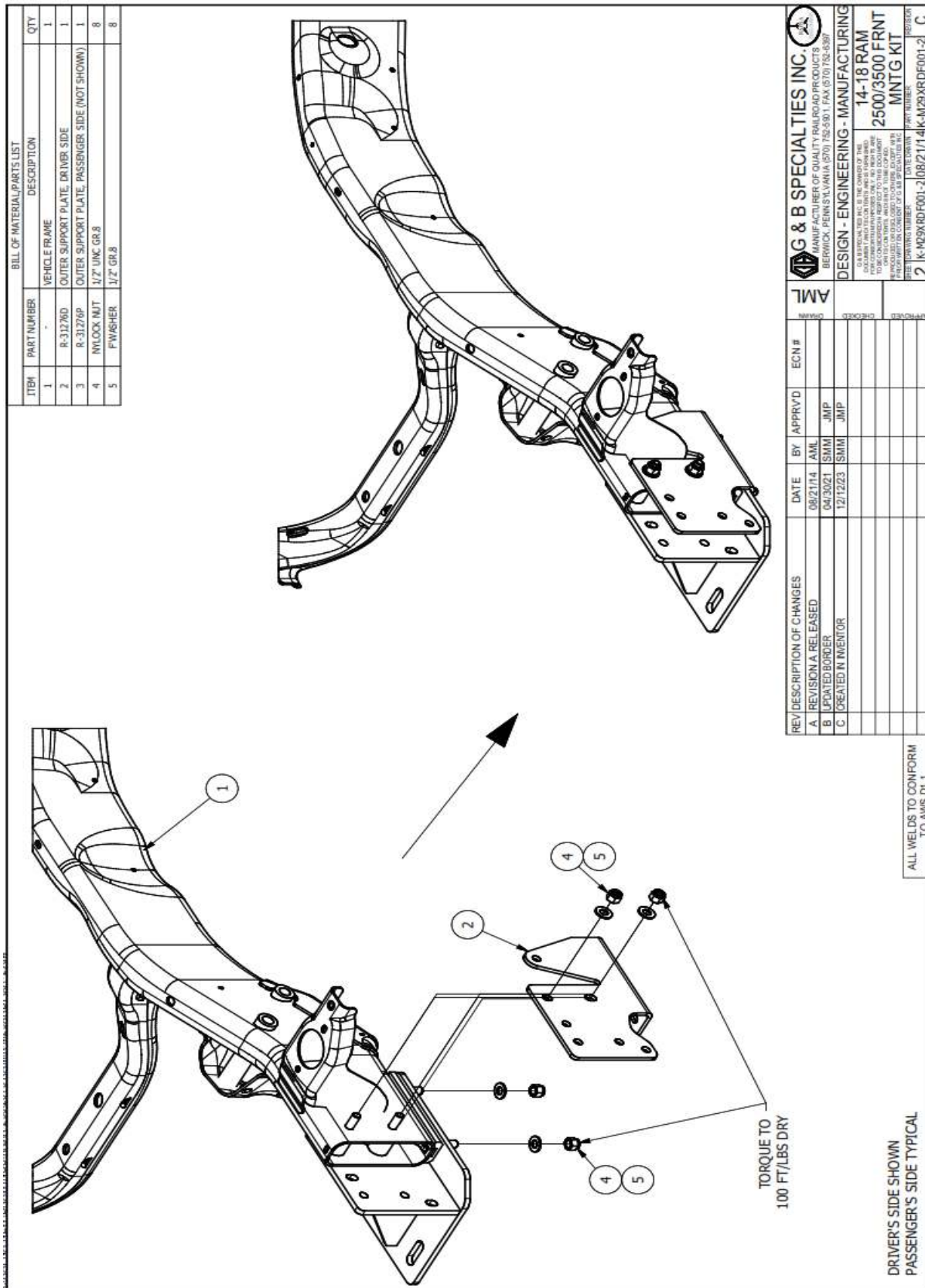


Figure 1



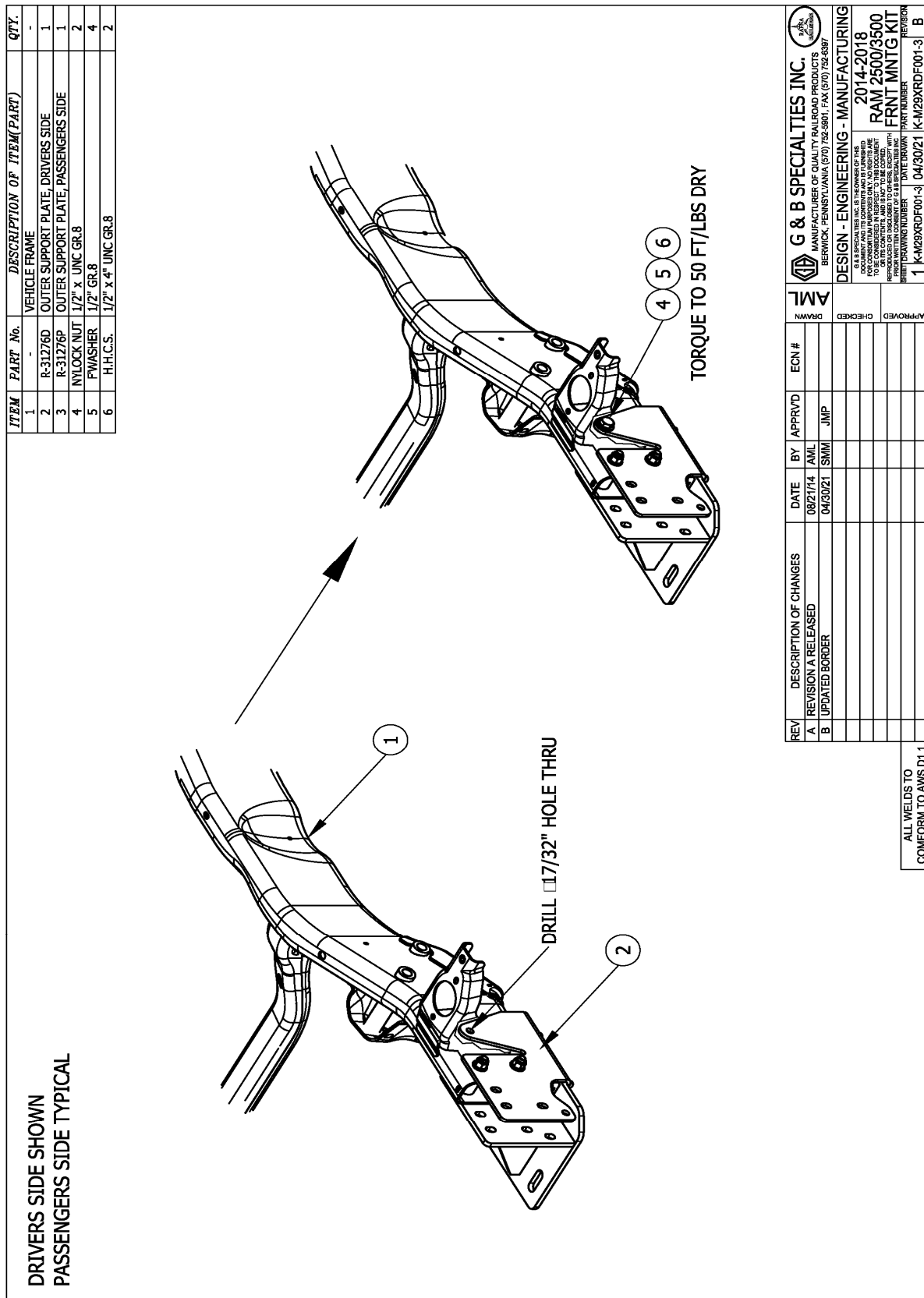


Figure 3

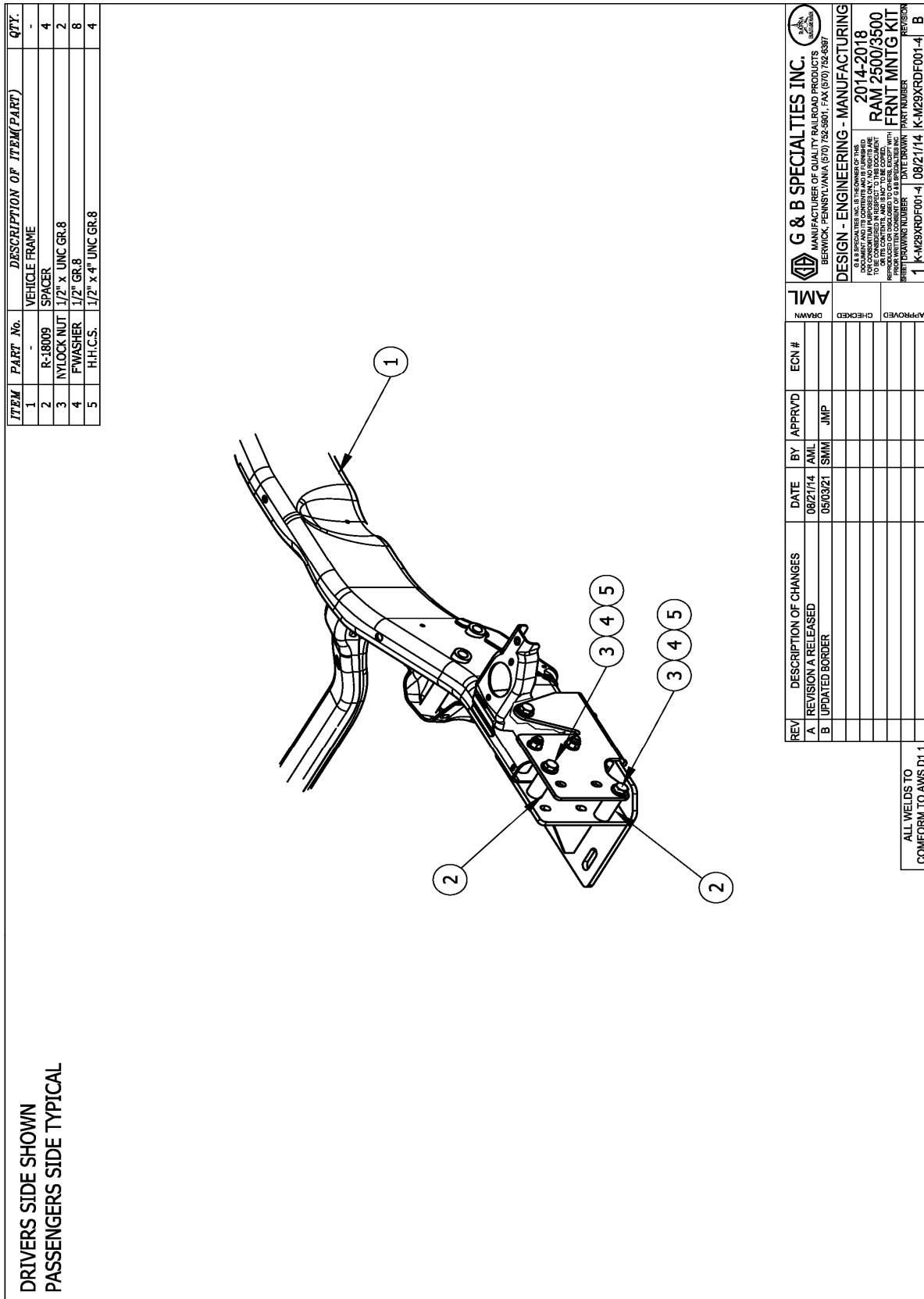
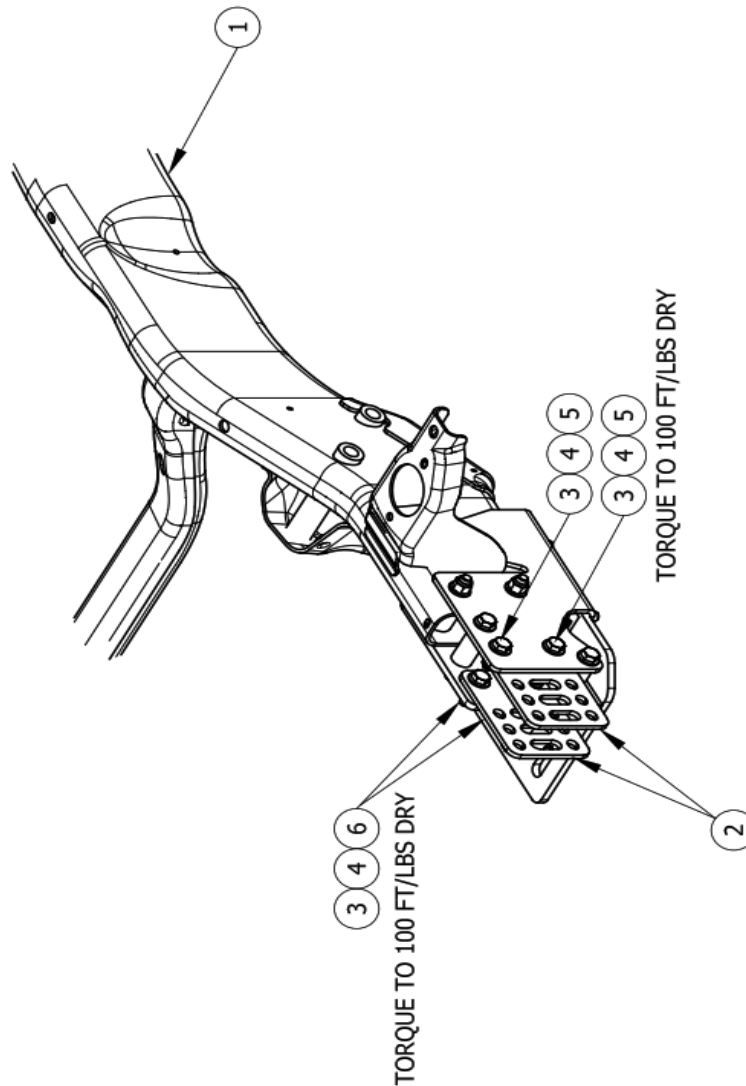


Figure 4

ITEM	PART NO.	DESCRIPTION OF ITEM(PART)	QTY.
1	-	VEHICLE FRAME	-
2	R-32101	BUMPER MTG PLATE	4
3	NYLOCK NUT	1/2" x UNC GR.8	8
4	FWASHER	1/2" GR.8	16
5	H.H.C.S.	1/2" x 1.5" UNC GR.8	4
6	H.H.C.S.	1/2" x 1.5" UNC GR.8	4



REV	DESCRIPTION OF CHANGES	DATE	BY	APPRVD	ECN #
A	REVISION A RELEASED	08/21/14	AML	JMP	
B	UPDATED BORDER	05/03/21	JSMI	JMP	
C	UPDATED BUMPER BRKT VIEW	12/16/23	JSMI	JMP	


G & B SPECIALTIES INC.
 MANUFACTURER OF QUALITY RAILROAD PRODUCTS
 BERWICK, PENNSYLVANIA (570) 752-5001 / FAX (570) 752-4397

DESIGN - ENGINEERING - MANUFACTURING

2014-2018

RAM 2500/3500
FRNT MNTNG KIT

2014-2018

DATE DRAWN PART NUMBER
1 K-M29XRDF001-5 C

REWORK

ALL SPECIALTIES INC. IS THE OWNER OF THIS DOCUMENT AND ALL RIGHTS ARE RESERVED FOR CONSULTANT HAS NOT BEEN REVIEWED ON THIS CONTAINER. NEW PART TO BE USED IN PRODUCTION. COORDINATE WITH G.B.SPECIALTIES INC.

APPROVED CHECKED DRAWN

ALL WELDS TO
CONFORM TO AWS D1.1

Figure 5

OPERATION, SERVICE AND PARTS OF R-290 FRONT MOUNTING KIT 2014 - 2018 RAM 2500/3500 4x4/4x2

OPERATION SAFETY PRECAUTIONS

If any installation/operation problems are encountered, please call G&B Specialties, Inc. for technical assistance before continuing with the installation process.



- Failure to heed to any of the following warnings could result in severe bodily injury and/or equipment damage.
- Read and understand this manual completely before attempting operation of the equipment.
- Operation instructions provided below only address the RAFNA railgear equipment. Applicable railway company procedures and policies must be adhered to.
- Before performing any work under the vehicle or railgear, ensure the engine is turned off and the parking brake is set.
- Always disconnect the vehicle's battery when welding on the vehicle or railgear in order to protect the vehicle's electrical system.
- Failure to heed to any of the following warnings could result in severe bodily injury and/or equipment damage.
- Railway company rules governing rail travel must be observed at all times.
- Never operate the vehicle if the Gross Vehicle Weight Rating (GVWR), Gross Axle Weight Rating Front or Rear (GAWR), or the wheel or tire load ratings are exceeded.

OPERATION OF FRONT MOUNTING KIT

With the front mounting kit installed on this vehicle, it may be operated as normal, however the mounting plates are located further forward than the front bumper. Caution must be used when operating the vehicle.

Never operate the vehicle if the Gross Vehicle Weight Rating (GVWR), Gross Axle Weight Rating Front or Rear (GAWR), or the wheel or tire load ratings are exceeded.

SERVICE OF FRONT MOUNTING KIT

The front mounting kit must be serviced regularly to avoid damage to the equipment. Table 1 below provides the Recommended Service Schedule and Table 2 provides Standard Fastener Torque Values.

Table 1: Recommended Service Schedule

Service Required	Initial 100 km (62 Miles) of road and/or rail use	Daily	Weekly	Monthly
Inspect front mounting kit fasteners (re-torque if required)		✓	✓	✓

Table 2: Standard Fastener Torque Values

Fastener Size	Fastener Torque Value (ft-lbs) Dry
1" UNC Gr. 8 Fasteners	250
¾" UNC Gr. 8 Fasteners	175
⅝" UNC Gr. 8 Fasteners	150
½" UNC Gr. 8 Fasteners	100
⅜" UNC Gr. 8 Fasteners	40
¼" UNC Gr. 8 Fasteners	12