

# RAFNA R-1130 Cushion-Ride Railgear

## Description:

G&B Specialties' Model R-1130 railgear is designed for vehicles with GVWR's of 33,000 lbs or larger, using high carbon steel and hardened steel castings. The R-1130 front railgear utilizes the vehicle's front suspension and the frame to lift the front wheels off the track approximately two inches. The dual scissor rear railgear attaches to the vehicle's frame behind the spring hangers. The scissor design makes for a more speedy operation of getting the vehicle on track and off track. The rear gear also incorporates "Cushion-Ride" springs for constant railhead pressure. With the R-1130, there are no limits imposed. If the vehicle can support the load, so can the railgear.



## Standard Features:

- Rear Constant Railhead Pressure
- Adjustable Axle from Standard to Wide
- Rear Air Lock-Up; Front Manual Pin Lock-Up
- Non-Insulated Cast Steel Wheels
- Double Acting Hydraulic Cylinders
- PTO Application
- Heavy Duty Tapered Roller Bearings
- Built-in Derail Skids
- Front and Rear Rail Sweeps
- Corrosion Resistant, Long-Life Fasteners

## Optional Features:

- Air Brake Package—Front and Rear
- Insulated Cast Steel Wheels
- Front Locking System—Air or Spring Pin

# RAFNA R-1130 Cushion-Ride Railgear



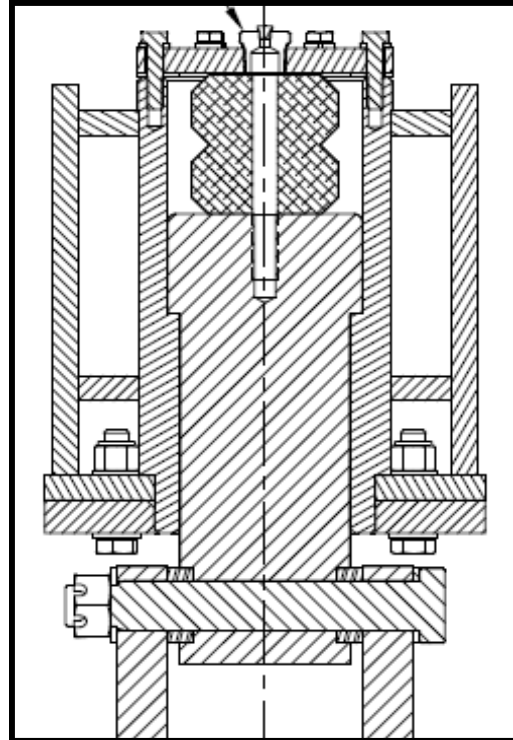
Front R-1130: Road Position



Rear R-1130: Road Position

## Vehicle Classification:

- GVWR—33,000 lbs and Above
- GAWR (Front) - 20,000 lbs
- GAWR (Rear) - 46,000 lbs



Rear R-1130 Section: Constant Railhead Pressure



*G&B Specialties*

P.O. Box 305

535 West Third Street

Berwick, PA 18603

570-752-5901

[www.rafna.com](http://www.rafna.com)

 **G&B Specialties**  
A Wabtec subsidiary

Rev B 07-22-2015